



Order: (888)-282-5810 (Phone)
(818)-707-0392 (Fax)
order@abiocode.com
Web: www.Abiocode.com

MSH2 (N) Antibody, Rabbit Polyclonal

Cat#: R1490-1

Quantity: 100 ul

Predicted | Observed MW: 105 | 120 kDa

Lot#: Refer to vial

Application: WB

Uniprot ID: P43246

Background:

DNA mismatch repair protein MSH2 belongs to the DNA mismatch repair MutS family and is a component of the post-replicative DNA mismatch repair system (MMR). MSH2 forms two different heterodimers: MutS alpha (MSH2-MSH6 heterodimer) and MutS beta (MSH2-MSH3 heterodimer), which binds to DNA mismatches to initiate DNA repair. MutS alpha recognizes single base mismatches and dinucleotide insertion-deletion loops (IDL) in the DNA. MutS beta recognizes larger insertion-deletion loops up to 13 nucleotides long. After mismatch binding, MutS alpha or beta forms a ternary complex with the MutL alpha heterodimer, which is thought to be responsible for directing the downstream MMR events, including strand discrimination, excision and resynthesis.

Other Names:

DNA mismatch repair protein Msh2, hMSH2, MutS protein homolog 2

Source and Purity:

Rabbit polyclonal antibodies were produced by immunizing animals with a GST-fusion protein containing the N-terminal region of human MSH2. Antibodies were purified by affinity purification using immunogen.

Storage Buffer and Condition:

Supplied in 1 x PBS (pH 7.4), 100 ug/ml BSA, 40% Glycerol, 0.01% NaN₃. Store at -20 °C. Stable for 6 months from date of receipt.

Species Specificity:

Human, Mouse

Tested Applications:

WB: 1:500-1:2,000 (detect endogenous protein*)

*: The apparent protein size on WB may be different from the calculated M.W. due to modifications.

Product Data:

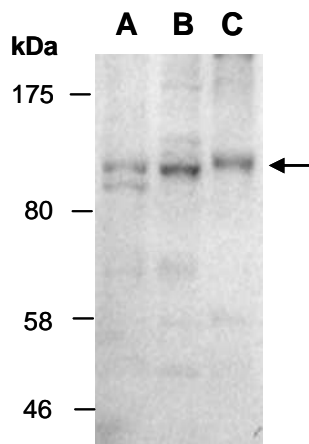


Fig 1. Western blot of total cell extracts from (A) human A431, (B) human HeLa, (C) mouse MEF, using Ab (R1490-1) at RT for 2 h.