



Order: (888)-282-5810 (Phone)  
(818)-707-0392 (Fax)  
[order@abiocode.com](mailto:order@abiocode.com)  
Web: [www.Abiocode.com](http://www.Abiocode.com)

---

## **CX3CR1 (C) Antibody, Rabbit Polyclonal**

**Cat#: R0977-2**

**Quantity: 100 ul**

**Predicted | Observed MW: 40 | 40, 50 kDa**

**Lot#: Refer to vial**

**Application: WB**

**Uniprot ID: P49238**

### **Background:**

CX3C chemokine receptor 1 (CX3CR1) is a multi-pass membrane protein that belongs to the G-protein coupled receptor 1 family, which is expressed in lymphoid and neural tissues. CX3CR1 is a receptor for the CX3C chemokine fractalkine and mediates both its adhesive and migratory functions. CX3CR1 acts as a coreceptor with CD4 for HIV-1 virus envelope protein. Variations in CX3CR1 are associated with rapid progression to AIDS. Defects in CX3CR1 are a cause of susceptibility to age-related macular degeneration type 12 (ARMD12).

### **Other Names:**

CX3C chemokine receptor 1, C-X3-C CKR-1, CX3CR1, Beta chemokine receptor-like 1, CMK-BRL-1, CMK-BRL1, Fractalkine receptor, G-protein coupled receptor 13, V28, CMKBRL1, GPR13

### **Source and Purity:**

Rabbit polyclonal antibodies were produced by immunizing animals with a GST-fusion protein containing the C-terminal region of human CX3CR1. Antibodies were purified by affinity purification using immunogen.

### **Storage Buffer and Condition:**

Supplied in 1 x PBS (pH 7.4), 100 ug/ml BSA, 40% Glycerol, 0.01% NaN<sub>3</sub>. Store at -20 °C. Stable for 6 months from date of receipt.

### **Species Specificity:**

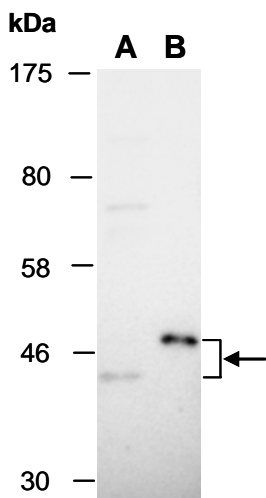
Human, Mouse

### **Tested Applications:**

WB: 1:500-1:2,000 (detect endogenous protein\*)

\*: The apparent protein size on WB may be different from the calculated M.W. due to modifications.

**Product Data:**



**Fig 1.** Western blot of total cell extracts from (A) human glioblastoma cells, (B) mouse spleen, using Ab (R0977-2) at RT for 2 h.