



Order: (888)-282-5810 (Phone)
(818)-707-0392 (Fax)
order@abiocode.com
Web: www.Abiocode.com

MMP15 (M) Antibody, Rabbit Polyclonal

Cat#: R1030-1

Quantity: 100 ul

Predicted | Observed MW: 76 kDa

Lot#: Refer to vial

Application: WB

Uniprot ID: P51511

Background:

Matrix metalloproteinase-15 (MMP15) is a single-pass type I membrane protein belonging to the peptidase M10A family. MMP15 is an endopeptidase that degrades various components of the extracellular matrix. Proteins of the matrix metalloproteinase (MMP) family are involved in the breakdown of extracellular matrix in normal physiological processes, such as embryonic development, reproduction, and tissue remodeling, as well as in disease processes, such as arthritis and metastasis. Most MMP's are secreted as inactive proenzymes which are activated when cleaved by extracellular proteinases. However, MMP15 is a member of the membrane-type MMP (MT-MMP) subfamily; members of this subfamily can be anchored to the extracellular membrane by either a transmembrane domain or glycoposphatidylinositol linkage, suggesting that these proteins are expressed at the cell surface rather than secreted in a soluble form.

Other Names:

Matrix metalloproteinase-15, MMP-15, Membrane-type matrix metalloproteinase 2, MT-MMP 2, MTMMP2, Membrane-type-2 matrix metalloproteinase, MT2-MMP, MT2MMP, SMCP-2

Source and Purity:

Rabbit polyclonal antibodies were produced by immunizing animals with a GST-fusion protein containing the middle region of human MMP15. Antibodies were purified by affinity purification using immunogen.

Storage Buffer and Condition:

Supplied in 1 x PBS (pH 7.4), 100 ug/ml BSA, 40% Glycerol, 0.01% NaN₃. Store at -20 °C. Stable for 6 months from date of receipt.

Species Specificity:

Human, Mouse

Tested Applications:

WB: 1:500-1:2,000 (detect endogenous protein*)

*: The apparent protein size on WB may be different from the calculated M.W. due to modifications.

For research use only. Not for therapeutic or diagnostic purposes.
Abiocode, Inc., 29397 Agoura Rd., Ste 106, Agoura Hills, CA 91301

Product Data:

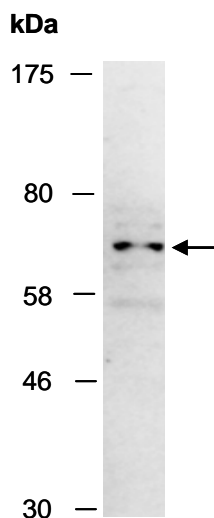


Fig 1. Western blot of total cell extracts from mouse brain, using Ab (R1030-1) at RT for 2 h.