



Order: (888)-282-5810 (Phone)  
(818)-707-0392 (Fax)  
[order@abiocode.com](mailto:order@abiocode.com)  
Web: [www.Abiocode.com](http://www.Abiocode.com)

---

## **TET1 Antibody, Mouse Monoclonal**

**Cat#: M1084-1**

**Quantity: 100 ul**

**Predicted M.W.: 235 kDa**

**Isotype: Mouse IgM**

**Lot#: Refer to vial**

**Application: WB**

**Uniprot ID: Q8NFU7**

**Clone: 3F3**

### **Background:**

TET1 is a methylcytosine dioxygenase that catalyzes the conversion of the modified genomic base 5-methylcytosine (5mC) into 5-hydroxymethylcytosine (5hmC). Methylation at the C5 position of cytosine bases is an epigenetic modification of the mammalian genome which plays an important role in transcriptional regulation. TET1 might initiate a process leading to cytosine demethylation through deamination into 5-hydroxymethyluracil (5hmU) and subsequent replacement by unmethylated cytosine by the base excision repair system. TET1 preferentially binds to CpG-rich sequences at promoters of both transcriptionally active and polycomb-repressed genes. By controlling the levels of 5mC and 5hmC at gene promoters, it may regulate the gene silencing induced by cytosine methylation. It has been shown that TET1 plays an important role in embryonic stem cells maintenance and regulating the balance between pluripotency and lineage commitment.

### **Other Names:**

Methylcytosine dioxygenase TET1, CXXC-type zinc finger protein 6, Leukemia-associated protein with a CXXC domain, Ten-eleven translocation 1 gene protein, CXXC6, KIAA1676, LCX

### **Source and Purity:**

Mouse monoclonal antibodies were produced by immunizing animals with GST-fusion proteins containing multiple regions of human TET1, and provided as ascites.

### **Storage Buffer and Condition:**

Supplied as ascites containing 40% Glycerol and 0.01% NaN<sub>3</sub>. Store at -20°C. Stable for 6 months from date of receipt.

### **Species Specificity:**

Human, Mouse

### **Tested Applications:**

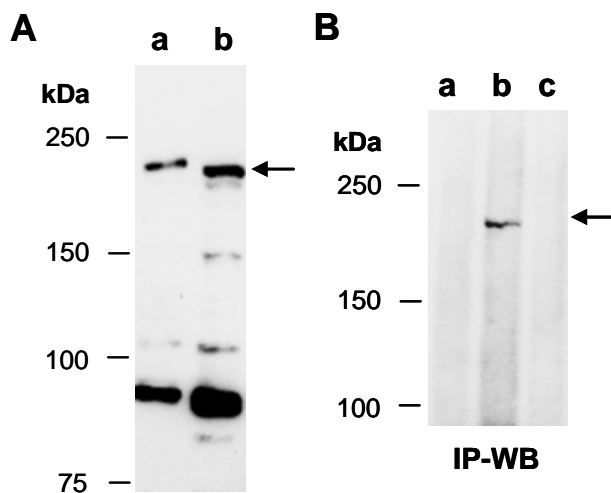
WB: 1:1,000-1:3,000 (detect endogenous protein\*)

\*: The apparent protein size on WB may be different from the calculated M.W. due to modifications.

---

**For research use only. Not for therapeutic or diagnostic purposes.  
Abiocode, Inc., 29397 Agoura Rd., Ste 106, Agoura Hills, CA 91301**

**Product Data:**



**Fig 1. (A)** Western blot of total cell extracts from a. human Jurkat, b. mouse thymus, using monoclonal anti-TET1 (M1084-1) at RT for 2 h. **(B)** IP-Western. Total extracts from mouse thymus were immunoprecipitated with a. IgG, b. anti-TET1 (R1084-4), c. anti-TET3 (R1092-1); followed by WB with monoclonal anti-TET1 (M1084-1) at RT for 2 h.