



Order: (888)-282-5810 (Phone)
(818)-707-0392 (Fax)
order@abiocode.com
Web: www.Abiocode.com

KDM4B (vPair™) Antibodies

Cat#: R0230-vp

Lot#: Refer to vial

Predicted M.W.: 122 kDa

Uniprot ID: O94953

Application: WB

Quantity: 50 ul KDM4B (C) (R0230-1) Rabbit Polyclonal Antibody &

50 ul KDM4B (M) (R0230-2) Rabbit Polyclonal Antibody

Product Introduction:

vPair™ antibodies represent a pair of fully characterized antibodies that recognize two different regions of a target protein. The product is developed by Abiocode to address whether the signal observed truly represents the protein of interest, an often encountered issue in antibody-based assays. The use of a pair of fully characterized vPair™ antibodies in the same assay can validate signal specificity since vPair™ antibodies recognize two independent epitopes of the same protein. Different sets of vPair™ antibodies are developed at Abiocode to work with specific applications, including antibody arrays, Western blot, IP-Western, ChIP, IHC, and FACS.

Background:

Lysine-specific demethylase 4B (KDM4B) is a histone demethylase that specifically demethylates 'Lys-9' of histone H3, thereby playing a role in histone code. KDM4B does not demethylate histone H3 'Lys-4', H3 'Lys-27', H3 'Lys-36' nor H4 'Lys-20'. KDM4B only demethylates trimethylated H3 'Lys-9', and it has a weaker activity than KDM4A, KDM4C and KDM4D.

Other Names:

Lysine-specific demethylase 4B, JmjC domain-containing histone demethylation protein 3B, Jumonji domain-containing protein 2B, JHDM3B, JMJD2B, KIAA0876

Source and Purity:

Rabbit polyclonal antibodies were produced by immunizing animals with a GST-fusion protein containing either the C-terminal [KDM4B (C) (R0230-1)] or the middle [KDM4B (M) (R0230-2)] region of human KDM4B. Antibodies were purified by affinity purification using immunogen.

Storage Buffer and Condition:

Supplied in 1 x PBS (pH 7.4), 100 ug/ml BSA, 40% Glycerol, 0.01% NaN₃. Store at -20 °C. Stable for 6 months from date of receipt.

**For research use only. Not for therapeutic or diagnostic purposes.
Abiocode, Inc., 29397 Agoura Rd., Ste 106, Agoura Hills, CA 91301**

Species Specificity:

Human

Tested Applications:

WB: 1:1,000-1:5,000 (detect endogenous protein*)

*: The apparent protein size on WB may be different from the calculated M.W. due to modifications.

Product Data:

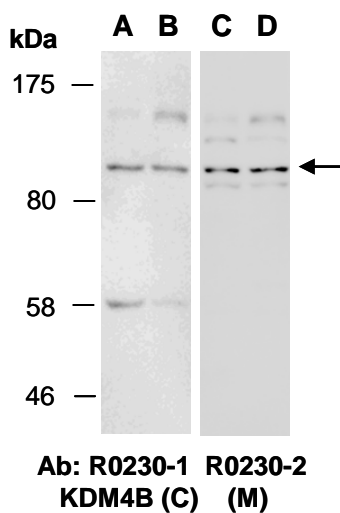


Fig 1. Western blot of total cell extracts from (A, C) human HeLa; (B, D) human Jurkat; using 2 different Abs against 2 distinct regions of human KDM4B at RT for 2 h.