



Order: (888)-282-5810 (Phone)  
(818)-707-0392 (Fax)  
[order@abiocode.com](mailto:order@abiocode.com)  
Web: [www.Abiocode.com](http://www.Abiocode.com)

---

## **KDM1A (M) Antibody, Rabbit Polyclonal**

**Cat#: R0232-4**

**Quantity: 100 ul**

**Predicted I Observed M.W.: 93 I 120 kDa**

**Lot#: Refer to vial**

**Application: WB**

**Uniprot ID: O60341**

### **Background:**

Lysine-specific histone demethylase 1A (KDM1A) is a histone demethylase that demethylates both 'Lys-4' (H3K4me) and 'Lys-9' (H3K9me) of histone H3, thereby acting as a coactivator or a corepressor, depending on the context. KDM1A acts as a corepressor by mediating demethylation of H3K4me, a specific tag for epigenetic transcriptional activation. KDM1A can demethylate both mono- (H3K4me1) and di-methylated (H3K4me2) H3K4me, and may play a role in the repression of neuronal genes. KDM1A also acts as a coactivator of androgen receptor (ANDR)-dependent transcription, by being recruited to ANDR target genes and mediating demethylation of H3K9me, a specific tag for epigenetic transcriptional repression. KDM1A is required for gastrulation during embryogenesis.

### **Other Names:**

Lysine-specific histone demethylase 1A, BRAF35-HDAC complex protein BHC110, Flavin-containing amine oxidase domain-containing protein 2, AOF2, KDM1, KIAA0601, LSD1

### **Source and Purity:**

Rabbit polyclonal antibodies were produced by immunizing animals with a GST-fusion protein containing the middle region of human KDM1A. Antibodies were purified by affinity purification using immunogen.

### **Storage Buffer and Condition:**

Supplied in 1 x PBS (pH 7.4), 100 ug/ml BSA, 40% Glycerol, 0.01% NaN<sub>3</sub>. Store at -20 °C. Stable for 6 months from date of receipt.

### **Species Specificity:**

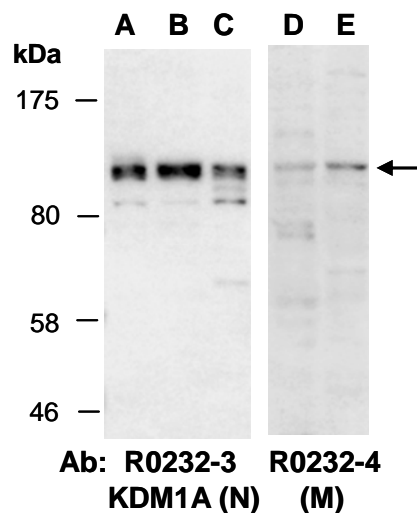
Human, Mouse

### **Tested Applications:**

WB: 1:1,000-1:5,000 (detect endogenous protein\*)

\*: The apparent protein size on WB may be different from the calculated M.W. due to modifications.

**Product Data:**



**Fig 1.** Western blot of total cell extracts from (A) human HeLa; (B, D) human Jurkat; (C, E) mouse thymus; using 2 different Abs against 2 distinct regions of human KDM1A at RT for 2 h. The observed M.W. of KDM1A is approximately 120 kD.