



Order: (888)-282-5810 (Phone)  
(818)-707-0392 (Fax)  
[order@abiocode.com](mailto:order@abiocode.com)  
Web: [www.Abiocode.com](http://www.Abiocode.com)

---

## **IKKB (C) Antibody, Rabbit Polyclonal**

**Cat#: R1338-2**

**Quantity: 100 ul**

**Predicted | Observed MW: 87 kDa**

**Lot#: Refer to vial**

**Application: WB**

**Uniprot ID: O14920**

### **Background:**

Inhibitor of nuclear factor kappa-B kinase subunit beta (IKKB) belongs to the protein kinase superfamily. IKKB is a serine kinase that plays an essential role in the NF-kappa-B signaling pathway, which is activated by multiple stimuli such as inflammatory cytokines, bacterial or viral products, DNA damages or other cellular stresses. Within the nucleus, IKKB acts as an adapter protein for NFKBIA degradation in UV-induced NF-kappa-B activation.

### **Other Names:**

Inhibitor of nuclear factor kappa-B kinase subunit beta, IKBKB, I-kappa-B-kinase beta, IKK-B, IKK-beta, Ikbkb, I-kappa-B kinase 2, IKK2, Nuclear factor NF-kappa-B inhibitor kinase beta, NFKBIKB

### **Source and Purity:**

Rabbit polyclonal antibodies were produced by immunizing animals with a GST-fusion protein containing the C-terminal region of human IKKB. Antibodies were purified by affinity purification using immunogen.

### **Storage Buffer and Condition:**

Supplied in 1 x PBS (pH 7.4), 100 ug/ml BSA, 40% Glycerol, 0.01% NaN<sub>3</sub>. Store at -20 °C. Stable for 6 months from date of receipt.

### **Species Specificity:**

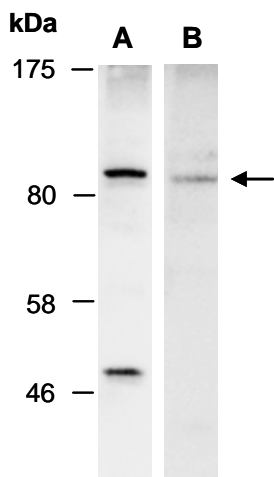
Human, Mouse

### **Tested Applications:**

WB: 1:500-1:2,000 (detect endogenous protein\*)

\*: The apparent protein size on WB may be different from the calculated M.W. due to modifications.

**Product Data:**



**Fig 1.** Western blot of total cell extracts from (A) human HeLa, (B) mouse brain, using anti-IKKB (R1338-2) at RT for 2 h.