



Order: (888)-282-5810 (Phone)  
(818)-707-0392 (Fax)  
[order@abiocode.com](mailto:order@abiocode.com)  
Web: [www.Abiocode.com](http://www.Abiocode.com)

---

## **TLK1 (N) Antibody, Rabbit Polyclonal**

**Cat#: R1531-1**

**Quantity: 100 ul**

**Predicted | Observed MW: 87 kDa**

**Lot#: Refer to vial**

**Application: WB**

**Uniprot ID: Q9UKI8**

### **Background:**

Serine/threonine-protein kinase tousel-like 1 (TLK1) belongs to the protein kinase superfamily, Ser/Thr protein kinase family. TLK1 can be rapidly and transiently inhibited by phosphorylation following the generation of DNA double-stranded breaks (DSBs) during S-phase. This event is cell cycle checkpoint and ATM-pathway dependent and appears to regulate processes involved in chromatin assembly. TLK1 exists in several isoforms, and Isoform 3 protects the cells from the ionizing radiation by facilitating the repair of DSBs.

### **Other Names:**

Serine/threonine-protein kinase tousel-like 1, PKU-beta, Tousel-like kinase 1, KIAA0137

### **Source and Purity:**

Rabbit polyclonal antibodies were produced by immunizing animals with a GST-fusion protein containing the N-terminal region of human TLK1. Antibodies were purified by affinity purification using immunogen.

### **Storage Buffer and Condition:**

Supplied in 1 x PBS (pH 7.4), 100 ug/ml BSA, 40% Glycerol, 0.01% NaN<sub>3</sub>. Store at -20 °C. Stable for 6 months from date of receipt.

### **Species Specificity:**

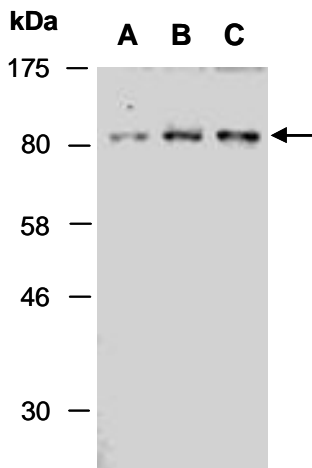
Human, Mouse

### **Tested Applications:**

WB: 1:500-1:2,000 (detect endogenous protein\*)

\*: The apparent protein size on WB may be different from the calculated M.W. due to modifications.

**Product Data:**



**Fig 1.** Western blot of total cell extracts from (A) human HeLa, (B) human Jurkat; (C) mouse thymus; using anti-TLK1 (N) (R1531-1) at RT for 2 h.