



Order: (888)-282-5810 (Phone)  
(818)-707-0392 (Fax)  
order@abiocode.com  
Web: www.Abiocode.com

---

## **KDM3A (C) Antibody, Rabbit Polyclonal**

**Cat#: R0233-2**

**Quantity: 100 ul**

**Predicted | Observed M.W.: 147 kDa**

**Lot#: Refer to vial**

**Application: WB**

**Uniprot ID: Q9Y4C1**

### **Background:**

Lysine-specific histone demethylase 3A (KDM3A) is a histone demethylase that specifically demethylates 'Lys-9' of histone H3, thereby playing a central role in histone code. KDM3A preferentially demethylates mono- and dimethylated H3 'Lys-9' residue, with a preference for dimethylated residue, while it has weak or no activity on trimethylated H3 'Lys-9'. KDM3A is involved in hormone-dependent transcriptional activation, by participating in recruitment to androgen-receptor target genes, resulting in H3 'Lys-9' demethylation and transcriptional activation. KDM3A has been implicated in spermatogenesis by regulating expression of target genes such as PRM1 and TMP1, which are required for packaging and condensation of sperm chromatin. KDM3A is also involved in obesity resistance through regulation of metabolic genes such as PPARA and UCP1.

### **Other Names:**

Lysine-specific demethylase 3A, JmjC domain-containing histone demethylation protein 2A, Jumonji domain-containing protein 1A, JHDM2A, JMJD1, JMJD1A, KIAA0742, TSGA

### **Source and Purity:**

Rabbit polyclonal antibodies were produced by immunizing animals with a GST-fusion protein containing the C-terminal region of human KDM3A. Antibodies were purified by affinity purification using immunogen.

### **Storage Buffer and Condition:**

Supplied in 1 x PBS (pH 7.4), 100 ug/ml BSA, 40% Glycerol, 0.01% NaN<sub>3</sub>. Store at -20 °C. Stable for 6 months from date of receipt.

### **Species Specificity:**

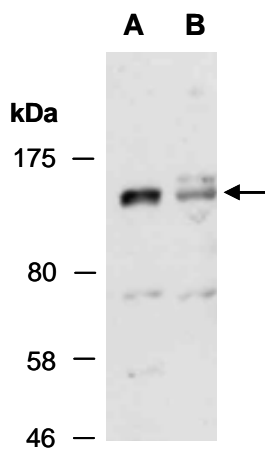
Human

### **Tested Applications:**

WB: 1:1,000-1:3,000 (detect endogenous protein\*)

\*: The apparent protein size on WB may be different from the calculated M.W. due to modifications.

**Product Data:**



**Fig 1.** Western blot of total cell extracts from (A) human Jurkat; (B) human T47D; using anti-KDM3A (C) (R0233-2) at RT for 2 h.