



Order: (888)-282-5810 (Phone)
(818)-707-0392 (Fax)
order@abiocode.com
Web: www.Abiocode.com

KDM4B (M) Antibody, Rabbit Polyclonal

Cat#: R0230-2b

Quantity: 100 ul

Predicted | Observed M.W.: 122 | 145 kDa

Lot#: Refer to vial

Application: WB

Uniprot ID: O94953

Background:

Lysine-specific demethylase 4B (KDM4B) is a histone demethylase that specifically demethylates 'Lys-9' of histone H3, thereby playing a role in histone code. KDM4B does not demethylate histone H3 'Lys-4', H3 'Lys-27', H3 'Lys-36' nor H4 'Lys-20'. KDM4B only demethylates trimethylated H3 'Lys-9', and it has a weaker activity than KDM4A, KDM4C and KDM4D.

Other Names:

Lysine-specific demethylase 4B, JmjC domain-containing histone demethylation protein 3B, Jumonji domain-containing protein 2B, JHDM3B, JMJD2B, KIAA0876

Source and Purity:

Rabbit polyclonal antibodies were produced by immunizing animals with a GST-fusion protein containing the middle region of human KDM4B. Antibodies were purified by affinity purification using immunogen.

Storage Buffer and Condition:

Supplied in 1 x PBS (pH 7.4), 100 ug/ml BSA, 40% Glycerol, 0.01% NaN₃. Store at -20 °C. Stable for 6 months from date of receipt.

Species Specificity:

Human

Tested Applications:

WB: 1:1,000-1:3,000 (detect endogenous protein*)

*: The apparent protein size on WB may be different from the calculated M.W. due to modifications.

Product Data:

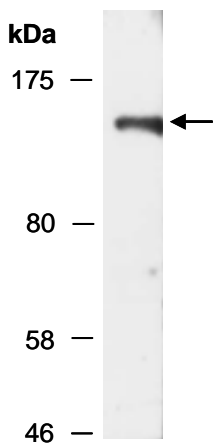


Fig 1. Western blot of total cell extracts from human T47D, using anti-KDM4B (M) (R0230-2b) at RT for 2 h, which detects a 145 kD form of KDM4B.