



Order: (888)-282-5810 (Phone)
(818)-707-0392 (Fax)
order@abiocode.com
Web: www.Abiocode.com

FGL2 (C2) Antibody, Rabbit Polyclonal

Cat#: R0801-3

Quantity: 100 ul

Predicted | Observed M.W.: 50 | 70 kDa

Lot#: Refer to vial

Application: WB

Uniprot ID: Q14314

Background:

Fibroleukin (FGL2) is a homotetramer; disulfide-linked. FGL2 is constitutively expressed in cytotoxic T-cells. FGL2 contains 1 fibrinogen C-terminal domain. FGL2 may play a role in physiologic lymphocyte functions at mucosal sites.

Other Names:

Fibroleukin, Fibrinogen-like protein 2, pT49

Source and Purity:

Rabbit polyclonal antibodies were produced by immunizing animals with a GST-fusion protein containing the C-terminal region of human FGL2. Antibodies were purified by affinity purification using immunogen.

Storage Buffer and Condition:

Supplied in 1 x PBS (pH 7.4), 100 ug/ml BSA, 40% Glycerol, 0.01% NaN₃. Store at -20 °C. Stable for 6 months from date of receipt.

Species Specificity:

Human

Tested Applications:

WB: 1:1,000-1:3,000 (detect endogenous protein*)

*: The apparent protein size on WB may be different from the calculated M.W. due to modifications.

Product Data:

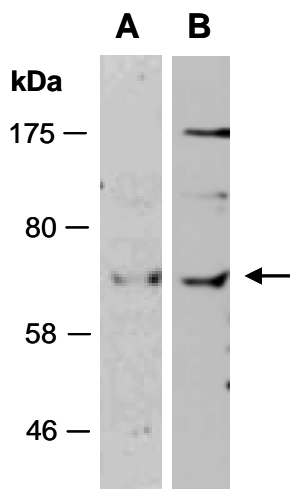


Fig 1. Western blot of total cell extracts from (A) human Jurkat, (B) human T47D, using anti-FGL2(C2) (R0801-3) at RT for 2 h.