



Order: (888)-282-5810 (Phone)  
(818)-707-0392 (Fax)  
[order@abiocode.com](mailto:order@abiocode.com)  
Web: [www.Abiocode.com](http://www.Abiocode.com)

---

## **TSC1 (C2) Antibody, Rabbit Polyclonal**

**Cat#: R0854-3**

**Quantity: 100 ul**

**Predicted | Observed MW: 130 kDa**

**Lot#: Refer to vial**

**Application: WB**

**Uniprot ID: Q92574**

### **Background:**

Tuberous sclerosis 1 protein (TSC1) is a peripheral membrane protein. In complex with TSC2, TSC1 inhibits the nutrient-mediated or growth factor-stimulated phosphorylation of S6K1 and EIF4EBP1 by negatively regulating mTORC1 signaling. It seems not to be required for TSC2 GAP activity towards RHEB. It is implicated as a tumor suppressor. TSC1 is involved in microtubule-mediated protein transport, but this seems to be due to unregulated mTOR signaling. Defects in TSC1 are the cause of tuberous sclerosis type 1 (TSC1) and may be the cause of focal cortical dysplasia of Taylor balloon cell type (FCDBC).

### **Other Names:**

Hamartin, Tuberous sclerosis 1 protein, KIAA0243, TSC

### **Source and Purity:**

Rabbit polyclonal antibodies were produced by immunizing animals with a GST-fusion protein containing the C-terminal region of human TSC1. Antibodies were purified by affinity purification using immunogen.

### **Storage Buffer and Condition:**

Supplied in 1 x PBS (pH 7.4), 100 ug/ml BSA, 40% Glycerol, 0.01% NaN<sub>3</sub>. Store at -20 °C. Stable for 6 months from date of receipt.

### **Species Specificity:**

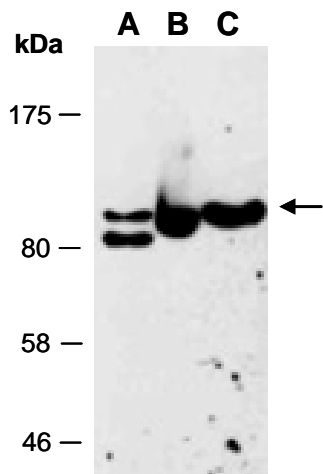
Human

### **Tested Applications:**

WB: 1:1,000-1:3,000 (detect endogenous protein\*)

\*: The apparent protein size on WB may be different from the calculated M.W. due to modifications.

**Product Data:**



**Fig 1.** Western blot of total cell extracts from (A) human HeLa, (B) human Jurkat, (C) human T47D, using anti-TSC1 (C2) (R0854-3) at RT for 2 h.