



Order: (888)-282-5810 (Phone)  
(818)-707-0392 (Fax)  
[order@abiocode.com](mailto:order@abiocode.com)  
Web: [www.Abiocode.com](http://www.Abiocode.com)

---

## CCR5 (C) Antibody, Rabbit Polyclonal

**Cat#: R0973-2**

**Quantity: 100 ul**

**Predicted M.W.: 41 kDa**

**Lot#: Refer to vial**

**Application: WB**

**Uniprot ID: P51681**

### **Background:**

C-C chemokine receptor type 5 (CCR5) is a multi-pass membrane protein that belongs to the G-protein coupled receptor 1 family. It is a receptor for a number of inflammatory CC-chemokines including MIP-1-alpha, MIP-1-beta and RANTES and subsequently transduces a signal by increasing the intracellular calcium ion level. It may play a role in the control of granulocytic lineage proliferation or differentiation. CCR5 acts as a coreceptor (CD4 being the primary receptor) for HIV-1 R5 isolates. Genetic variation in CCR5 is associated with susceptibility to diabetes mellitus insulin-dependent type 22 (IDDM22).

### **Other Names:**

C-C chemokine receptor type 5, C-C CKR-5, CC-CKR-5, CCR-5, CCR5, CHEMR13, HIV-1 fusion coreceptor, CD195, CMKBR5

### **Source and Purity:**

Rabbit polyclonal antibodies were produced by immunizing animals with a GST-fusion protein containing the C-terminal region of human CCR5. Antibodies were purified by affinity purification using immunogen.

### **Storage Buffer and Condition:**

Supplied in 1 x PBS (pH 7.4), 100 ug/ml BSA, 40% Glycerol, 0.01% NaN<sub>3</sub>. Store at -20 °C. Stable for 6 months from date of receipt.

### **Species Specificity:**

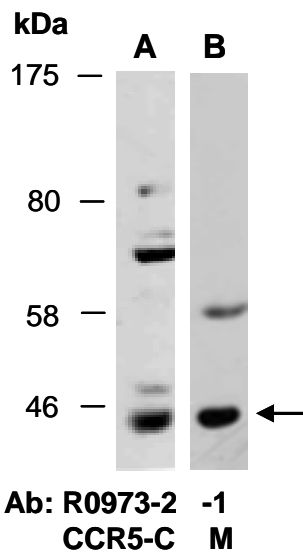
Human, Mouse

### **Tested Applications:**

WB: 1:1,000-1:3,000 (detect endogenous protein\*)

\*: The apparent protein size on WB may be different from the calculated M.W. due to modifications.

**Product Data:**



**Fig 1.** Western blot of total cell extracts from mouse brain, using 2 independent Abs against 2 distinct regions of human CCR5 at RT for 2 h.