



Order: (888)-282-5810 (Phone)  
(818)-707-0392 (Fax)  
[order@abiocode.com](mailto:order@abiocode.com)  
Web: [www.Abiocode.com](http://www.Abiocode.com)

---

## **TUBB1 (C3) Antibody, Rabbit Polyclonal**

**Cat#: R0742-3**

**Quantity: 100 ul**

**Predicted | Observed MW: 50 kDa**

**Lot#: Refer to vial**

**Application: WB**

**Uniprot ID: Q9H4B7**

### **Background:**

Tubulin beta-1 chain (TUBB1) belongs to the tubulin family and is the major constituent of microtubules. TUBB1 binds two moles of GTP, one at an exchangeable site on the beta chain and one at a non-exchangeable site on the alpha-chain. Some glutamate residues at the C-terminus are polyglutamylated. This modification occurs exclusively on glutamate residues and results in polyglutamate chains on the gamma-carboxyl group. Defects in TUBB1 are a cause of macrothrombocytopenia autosomal dominant TUBB1-related (MAD-TUBB1).

### **Other Names:**

Tubulin beta-1 chain

### **Source and Purity:**

Rabbit polyclonal antibodies were produced by immunizing animals with a GST-fusion protein containing the C-terminal region of human TUBB1. Antibodies were purified by affinity purification using immunogen.

### **Storage Buffer and Condition:**

Supplied in 1 x PBS (pH 7.4), 100 ug/ml BSA, 40% Glycerol, 0.01% NaN<sub>3</sub>. Store at -20 °C. Stable for 6 months from date of receipt.

### **Species Specificity:**

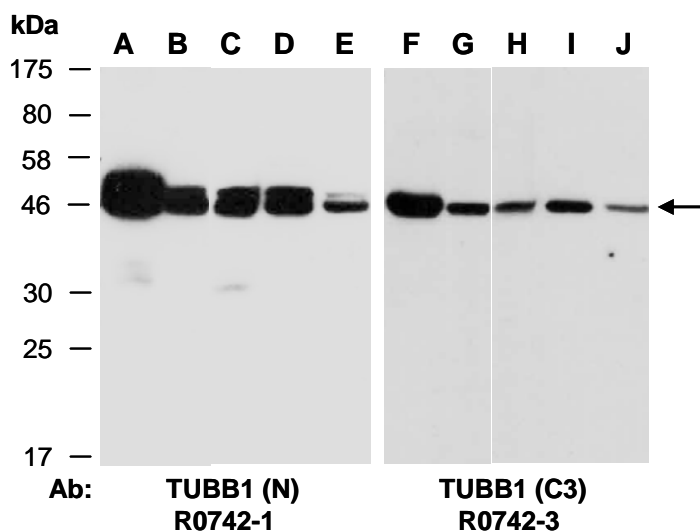
Human, Mouse

### **Tested Applications:**

WB: 1:1,000-1:3,000 (detect endogenous protein\*)

\*: The apparent protein size on WB may be different from the calculated M.W. due to modifications.

**Product Data:**



**Fig 1.** Western blot of total cell extracts from (A,F) mouse brain, (B,G) mouse spleen, (C,H) human HeLa, (D,I) human Jurkat, (E,J) human H1299; using 2 independent Abs against 2 distinct regions of human TUBB1 at RT for 2 h.