



Order: (888)-282-5810 (Phone)
(818)-707-0392 (Fax)
order@abiocode.com
Web: www.Abiocode.com

LAP2B (C1) Antibody, Rabbit Polyclonal

Cat#: R0817-2

Quantity: 100 ul

Predicted | Observed MW: 51 | 58 kDa

Lot#: Refer to vial

Application: WB

Uniprot ID: P42167

Background:

Lamina-associated polypeptide 2 (LAP2) is also known as Thymopoietin (TMPO), which is a single-pass type II membrane protein located in the inner nuclear membrane and tightly associated with the nuclear lamina. The LAP2 gene encodes three alternatively spliced mRNAs encoding proteins of 75 kDa (alpha), 51 kDa (beta) and 39 kDa (gamma) which are ubiquitously expressed in all cells. LAP2 may help direct the assembly of the nuclear lamina and thereby help maintain the structural organization of the nuclear envelope. It is also a possible receptor for attachment of lamin filaments to the inner nuclear membrane. LAP2 may be involved in the control of initiation of DNA replication through its interaction with NAKAP95. LAP2 can be further cleaved into 2 chains: Thymopoietin (TP) and Thymopentin (TP5). TP and TP5 may play a role in T-cell development and function. TP5 is an immunomodulating pentapeptide.

Other Names:

Lamina-associated polypeptide 2, isoforms beta/gamma; Thymopoietin, isoforms beta/gamma; TP beta/gamma; Thymopoietin-related peptide isoforms beta/gamma; TPRP isoforms beta/gamma; LAP2, TMPO

Source and Purity:

Rabbit polyclonal antibodies were produced by immunizing animals with a GST-fusion protein containing the C-terminal region of human LAP2B. Antibodies were purified by affinity purification using immunogen.

Storage Buffer and Condition:

Supplied in 1 x PBS (pH 7.4), 100 ug/ml BSA, 40% Glycerol, 0.01% NaN₃. Store at -20 °C. Stable for 6 months from date of receipt.

Species Specificity:

Human

Tested Applications:

WB: 1:1,000-1:3,000 (detect endogenous protein*)

*: The apparent protein size on WB may be different from the calculated M.W. due to modifications.

Product Data:

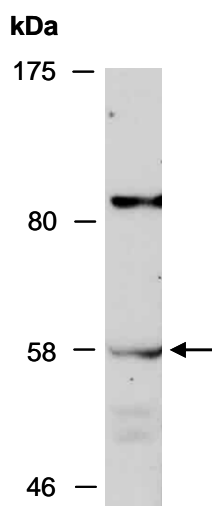


Fig 1. Western blot of total cell extracts from human Jurkat; using anti-LAP2B (C1) (R0817-2) at RT for 2 h.