



Order: (888)-282-5810 (Phone)  
(818)-707-0392 (Fax)  
[order@abiocode.com](mailto:order@abiocode.com)  
Web: [www.Abiocode.com](http://www.Abiocode.com)

---

## **KRT5 (M) Antibody, Rabbit Polyclonal**

**Cat#: R0865-2**

**Quantity: 100 ul**

**Predicted | Observed MW: 62 kDa**

**Lot#: Refer to vial**

**Application: WB**

**Uniprot ID: P13647**

### **Background:**

Keratin, type II cytoskeletal 5 (KRT5) belongs to the intermediate filament family. KRT5 is a heterotetramer of two type I and two type II keratins. Keratin-5 associates with keratin-14. KRT5 interacts with TCHP. Defects in KRT5 are the cause of epidermolysis bullosa simplex with migratory circinate erythema, of epidermolysis bullosa simplex Weber-Cockayne type, and of epidermolysis bullosa simplex Koebner type (K-EBS).

### **Other Names:**

Keratin, type II cytoskeletal 5, 58 kDa cytokeratin, Cytokeratin-5, CK-5, Keratin-5, K5, Type-II keratin Kb5

### **Source and Purity:**

Rabbit polyclonal antibodies were produced by immunizing animals with a GST-fusion protein containing the middle region of human KRT5. Antibodies were purified by affinity purification using immunogen.

### **Storage Buffer and Condition:**

Supplied in 1 x PBS (pH 7.4), 100 ug/ml BSA, 40% Glycerol, 0.01% NaN<sub>3</sub>. Store at -20 °C. Stable for 6 months from date of receipt.

### **Species Specificity:**

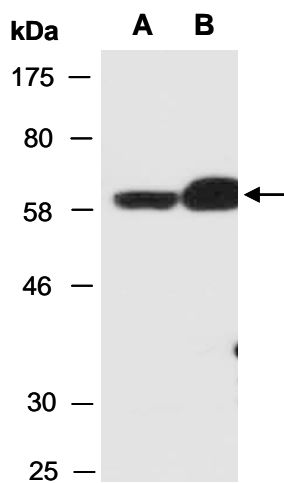
Human, Mouse

### **Tested Applications:**

WB: 1:1,000-1:3,000 (detect endogenous protein\*)

\*: The apparent protein size on WB may be different from the calculated M.W. due to modifications.

**Product Data:**



**Fig 1.** Western blot of total cell extracts from (A) mouse spleen, (B) mouse liver, using anti-KRT5 (M) (R0865-2) at RT for 2 h.