



Order: (888)-282-5810 (Phone)  
(818)-707-0392 (Fax)  
[order@abiocode.com](mailto:order@abiocode.com)  
Web: [www.Abiocode.com](http://www.Abiocode.com)

---

## **ANPEP (N) Antibody, Rabbit Polyclonal**

**Cat#: R0984-1**

**Quantity: 100 ul**

**Predicted | Observed MW: 110 | 160 kDa**

**Lot#: Refer to vial**

**Application: WB**

**Uniprot ID: P15144**

### **Background:**

Aminopeptidase N (ANPEP) is a single-pass type II membrane protein that plays a role in the final digestion of peptides generated from hydrolysis of proteins by gastric and pancreatic proteases. ANPEP may play a critical role in the pathogenesis of cholesterol gallstone disease and may be involved in the metabolism of regulatory peptides of diverse cell types including small intestinal and tubular epithelial cells, macrophages, granulocytes and synaptic membranes from the CNS. ANPEP is found to cleave antigen peptides bound to major histocompatibility complex class II molecules of presenting cells and to degrade neurotransmitters at synaptic junctions. ANPEP is also implicated as a regulator of IL-8 bioavailability in the endometrium, and therefore may contribute to the regulation of angiogenesis. ANPEP is used as a marker for acute myeloid leukemia and plays a role in tumor invasion.

### **Other Names:**

Aminopeptidase N, AP-N, hAPN, Alanyl aminopeptidase, Aminopeptidase M, AP-M, Microsomal aminopeptidase, Myeloid plasma membrane glycoprotein CD13, gp150, CD13

### **Source and Purity:**

Rabbit polyclonal antibodies were produced by immunizing animals with a GST-fusion protein containing the N-terminal region of human ANPEP. Antibodies were purified by affinity purification using immunogen.

### **Storage Buffer and Condition:**

Supplied in 1 x PBS (pH 7.4), 100 ug/ml BSA, 40% Glycerol, 0.01% NaN<sub>3</sub>. Store at -20 °C. Stable for 6 months from date of receipt.

### **Species Specificity:**

Human

### **Tested Applications:**

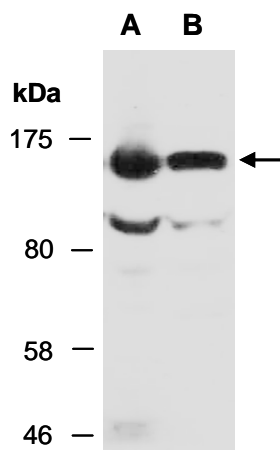
WB: 1:1,000-1:3,000 (detect endogenous protein\*)

\*: The apparent protein size on WB may be different from the calculated M.W. due to modifications.

---

**For research use only. Not for therapeutic or diagnostic purposes.  
Abiocode, Inc., 29397 Agoura Rd., Ste 106, Agoura Hills, CA 91301**

**Product Data:**



**Fig 1.** Western blot of total cell extracts from (A) human Jurkat, (B) human T47D; using anti-ANPEP (N) (R0984-1) at RT for 2 h.