



Order: (888)-282-5810 (Phone)  
(818)-707-0392 (Fax)  
[order@abiocode.com](mailto:order@abiocode.com)  
Web: [www.Abiocode.com](http://www.Abiocode.com)

---

## **MMP8 (C) Antibody, Rabbit Polyclonal**

**Cat#: R0141-2**

**Quantity: 100 ul**

**Predicted | Observed M.W.: 53 kDa**

**Lot#: Refer to vial**

**Application: WB**

**Uniprot ID: P22894**

### **Background:**

MMP8 is involved in the breakdown of extracellular matrix in normal physiological processes, such as embryonic development, reproduction, and tissue remodeling, as well as in disease processes, such as arthritis and metastasis. MMP8 cleaves interstitial collagens in the triple helical domain.

### **Other Names:**

CLG1

### **Source and Purity:**

Rabbit polyclonal antibodies were produced by immunizing animals with a GST-fusion protein containing C-terminal region of human MMP8. Antibodies were purified by affinity purification using immunogen.

### **Storage Buffer and Condition:**

Supplied in 1 x PBS (pH 7.4), 100 ug/ml BSA, 40% Glycerol, 0.01% NaN<sub>3</sub>. Store at -20 °C. Stable for 6 months from date of receipt.

### **Species Specificity:**

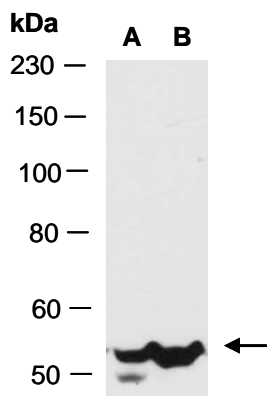
Human, Mouse

### **Tested Applications:**

WB: 1:1,000-1:3,000 (detect endogenous protein\*)

\*: The apparent protein size on WB may be different from the calculated M.W. due to modifications.

**Product Data:**



**Fig 1.** Western blot of total cell extracts from (A) mouse thymus and (B) human HepG2, using anti-MMP8 (C) (R0141-2 ) at RT for 2 h.