



Order: (888)-282-5810 (Phone)
(818)-707-0392 (Fax)
order@abiocode.com
Web: www.Abiocode.com

RB1 (C) Antibody, Rabbit Polyclonal

Cat#: R0185-1

Quantity: 100 ul

Predicted M.W.: 106 kDa

Lot#: Refer to vial

Application: WB

Uniprot ID: P06400

Background:

Retinoblastoma-associated protein (Rb) is a tumor suppressor and a key regulator of entry into cell division. RB1 acts as a transcription repressor of E2F1 target genes. The hypophosphorylated, active form of RB1 interacts with E2F1 and represses its transcription activity, leading to cell cycle arrest. RB1 is directly involved in heterochromatin formation by maintaining overall chromatin structure and, in particular, that of constitutive heterochromatin by stabilizing histone methylation. When it is time for a cell to enter S phase, complexes of cyclin-dependent kinases (CDK) and cyclins phosphorylate RB1 and inhibit its activity.

Other Names:

Retinoblastoma-associated protein, p105-Rb, pRb, pp110, Rb

Source and Purity:

Rabbit polyclonal antibodies were produced by immunizing animals with a GST-fusion protein containing the C-terminal region of human RB1. Antibodies were purified by affinity purification using immunogen.

Storage Buffer and Condition:

Supplied in 1 x PBS (pH 7.4), 100 ug/ml BSA, 40% Glycerol, 0.01% NaN₃. Store at -20 °C. Stable for 6 months from date of receipt.

Species Specificity:

Human

Tested Applications:

WB: 1:1,000-1:5,000 (detect endogenous protein*)

*: The apparent protein size on WB may be different from the calculated M.W. due to modifications.

Product Data:

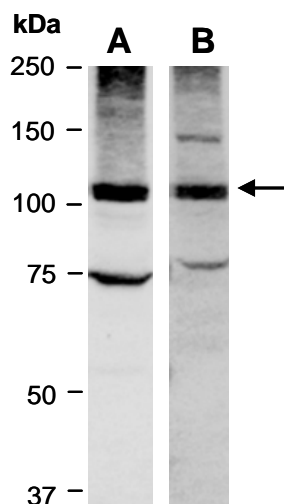


Fig 1. Western blot of total cell extracts from human Jurkat, using 2 independent antibodies against 2 distinct regions of human RB1 (A: R0185-1, C-terminal; B: R0185-2, Middle region) at RT for 2 h.