



Order: (888)-282-5810 (Phone)
(818)-707-0392 (Fax)
order@abiocode.com
Web: www.Abiocode.com

CDC16 (C) Antibody, Rabbit Polyclonal

Cat#: R0897-2

Quantity: 100 ul

Predicted | Observed M.W.: 72 | 80 kDa

Lot#: Refer to vial

Application: WB

Uniprot ID: Q13042

Background:

CDC16 component of the anaphase promoting complex/cyclosome (APC/C), a cell cycle-regulated E3 ubiquitin ligase that controls progression through mitosis and the G1 phase of the cell cycle.

Other Names:

ANAPC6, APC6, CUT9

Source and Purity:

Rabbit polyclonal antibodies were produced by immunizing animals with a GST-fusion protein containing C-terminal region of human CDC16. Antibodies were purified by affinity purification using immunogen.

Storage Buffer and Condition:

Supplied in 1 x PBS (pH 7.4), 100 ug/ml BSA, 40% Glycerol, 0.01% NaN₃. Store at -20 °C. Stable for 6 months from date of receipt.

Species Specificity:

Human, Mouse

Tested Applications:

WB: 1:1,000-1:3,000 (detect endogenous protein*)

*: The apparent protein size on WB may be different from the calculated M.W. due to modifications.

Product Data:

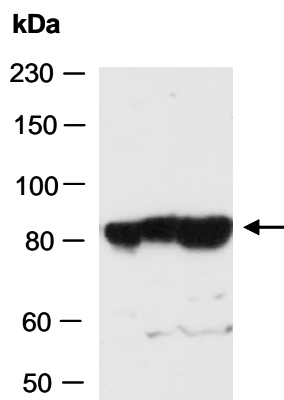


Fig 1. Western blot of total cell extracts from (A) mouse thymus, (B) human HepG2 and (C) human Jurkat ,using anti-CDC16 (C) (R0897-2) at RT for 2 h.