



Order: (888)-282-5810 (Phone)
(818)-707-0392 (Fax)
order@abiocode.com
Web: www.Abiocode.com

ENC1 (M) Antibody, Rabbit Polyclonal

Cat#: R1387-2

Quantity: 100 ul

Predicted | Observed M.W.: 66 kDa

Lot#: Refer to vial

Application: WB

Uniprot ID: O14682

Background:

ENC1 is an actin-binding protein involved in the regulation of neuronal process formation and in differentiation of neural crest cells. ENC1 is down-regulated in neuroblastoma tumors. ENC1 is highly expressed in adult brain, particularly high in the hippocampus and amygdala, and spinal chord.

Other Names:

ENC-1 KLHL37, NRPB, PIG10, TP53I10

Source and Purity:

Rabbit polyclonal antibodies were produced by immunizing animals with a GST-fusion protein containing middle region of human ENC1. Antibodies were purified by affinity purification using immunogen.

Storage Buffer and Condition:

Supplied in 1 x PBS (pH 7.4), 100 ug/ml BSA, 40% Glycerol, 0.01% NaN₃. Store at -20 °C. Stable for 6 months from date of receipt.

Species Specificity:

Human

Tested Applications:

WB: 1:1,000-1:3,000 (detect endogenous protein*)

*: The apparent protein size on WB may be different from the calculated M.W. due to modifications.

Product Data:

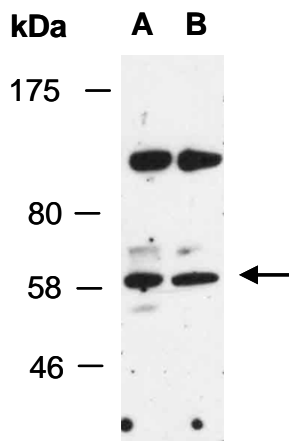


Fig 1. Western blot of total cell extracts from (A) human HepG2 and (B) human Jurkat, using Anti-ENC1(M) (R1387-2) at RT for 2 h.