



Order: (888)-282-5810 (Phone)
(818)-707-0392 (Fax)
order@abiocode.com
Web: www.Abiocode.com

EDIL3 (vPair™) Antibodies

Cat#: R1150-3

Uniprot ID: O43854

Predicted | Observed M.W.: 54 kDa

Quantity: 50 ul EDIL3 (C2) (R1150-2) Rabbit Polyclonal Antibody &

50 ul EDIL3 (N) (R1150-3) Rabbit Polyclonal Antibody

Lot#: Refer to vial

Application: WB

Product Introduction:

vPair™ antibodies represent a pair of fully characterized antibodies that recognize two different regions of a target protein. The product is developed by Abiocode to address whether the signal observed truly represents the protein of interest, an often encountered issue in antibody-based assays. The use of a pair of fully characterized vPair™ antibodies in the same assay can validate signal specificity since vPair™ antibodies recognize two independent epitopes of the same protein. Different sets of vPair™ antibodies are developed at Abiocode to work with specific applications, including antibody arrays, Western blot, IP-Western, ChIP, IHC, and FACS.

Background:

EDIL3 promotes adhesion of endothelial cells through interaction with the alpha-v/beta-3 integrin receptor. EDIL3 inhibits formation of vascular-like structures. EDIL3 is believed to be involved in regulation of vascular morphogenesis of remodeling in embryonic development.

Other Names:

DEL1

Source and Purity:

Rabbit polyclonal antibodies were produced by immunizing animals with GST-fusion proteins containing either the C-terminal [EDIL3 (C2) (R1150-2)] or the N-terminal [EDIL3 (N) (R1150-3)] region of human EDIL3. Antibodies were purified by affinity purification using immunogen.

Storage Buffer and Condition:

Supplied in 1 x PBS (pH 7.4), 100 ug/ml BSA, 40% Glycerol, 0.01% NaN₃. Store at -20 °C. Stable for 6 months from date of receipt.

Species Specificity:

Human, Mouse

For research use only. Not for therapeutic or diagnostic purposes.
Abiocode, Inc., 29397 Agoura Rd., Ste 106, Agoura Hills, CA 91301

Tested Applications:

WB: 1:1,000-1:3,000 (detect endogenous protein*)

*: The apparent protein size on WB may be different from the calculated M.W. due to modifications.

Product Data:

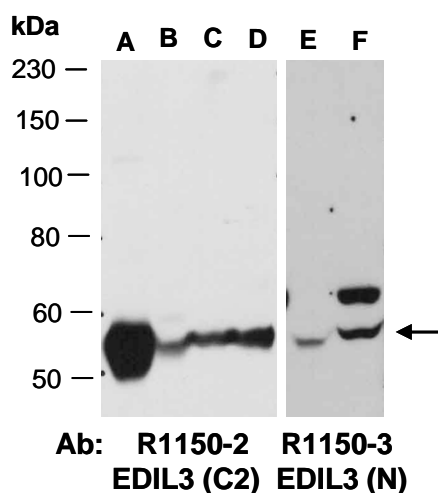


Fig 1. Western blot of total cell extracts from (A) mouse brain, (B) mouse thymus, (C, E) human HepG2, (D, F) human Jurkat; using 2 independent Abs against 2 distinct regions of human EDIL3 at RT for 2 h.