



Order: (888)-282-5810 (Phone)
(818)-707-0392 (Fax)
order@abiocode.com
Web: www.Abiocode.com

MAP2K7 (N) Antibody, Rabbit Polyclonal

Cat#: R1846-1

Quantity: 100 ul

Predicted | Observed M.W.: 47 | 58 kDa

Lot#: Refer to vial

Application: WB

Uniprot ID: O14733

Background:

MAP2K7 is a dual specificity protein kinase that belongs to the MAP kinase kinase family. MAP2K7 specifically activates MAPK8/JNK1 and MAPK9/JNK2, and this kinase itself is phosphorylated and activated by MAP kinase kinase kinases including MAP3K1/MEKK1, MAP3K2/MEKK2, MAP3K3/MEKK5, and MAP4K2/GCK. MAP2K7 is involved in the signal transduction mediating the cell responses to proinflammatory cytokines, and environmental stresses.

Other Names:

JNKK2, MEK7, MKK7, PRKMK7, SKK4

Source and Purity:

Rabbit polyclonal antibodies were produced by immunizing animals with a GST-fusion protein containing the N-terminal region of human MAP2K7. Antibodies were purified by affinity purification using immunogen.

Storage Buffer and Condition:

Supplied in 1 x PBS (pH 7.4), 100 ug/ml BSA, 40% Glycerol, 0.01% NaN₃. Store at -20 °C. Stable for 6 months from date of receipt.

Species Specificity:

Human

Tested Applications:

WB: 1:1,000-1:3,000 (detect endogenous protein*)

*: The apparent protein size on WB may be different from the calculated M.W. due to modifications.

Product Data:

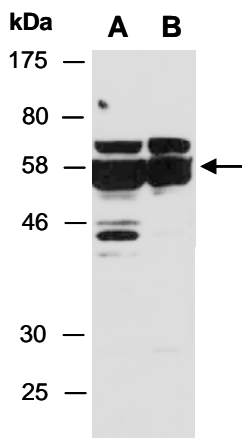


Fig 1. Western blot of total cell extracts from (A) human HeLa, (B) human MDA-MB231; using anti-MAP2K7 (N) (R1846-1) at RT for 2 h.