



Order: (888)-282-5810 (Phone)
(818)-707-0392 (Fax)
order@abiocode.com
Web: www.Abiocode.com

GDNF (C) Antibody, Rabbit Polyclonal

Cat#: R0200-1

Quantity: 100 ul

Predicted M.W.: 24 kDa

Lot#: Refer to vial

Application: WB

Uniprot ID: P39905

Background:

Glial cell line-derived neurotrophic factor (GDNF) is a highly conserved neurotrophic factor, which promotes the survival and differentiation of dopaminergic neurons, and prevents apoptosis of motor neurons induced by axotomy. GDNF is processed to a mature secreted form that exists as a homodimer, which is a ligand for the product of the RET (rearranged during transfection) proto-oncogene. Defects in GDNF may be associated with Hirschsprung's disease, Parkinson's disease and amyotrophic lateral sclerosis (ALS). GDNF also regulates kidney development, spermatogenesis and alcohol consumption.

Other Names:

Glial cell line-derived neurotrophic factor, Astrocyte-derived trophic factor, ATF

Source and Purity:

Rabbit polyclonal antibodies were produced by immunizing animals with a GST-fusion protein containing the C-terminal region of human GDNF. Antibodies were purified by affinity purification using immunogen.

Storage Buffer and Condition:

Supplied in 1 x PBS (pH 7.4), 100 ug/ml BSA, 40% Glycerol, 0.01% NaN₃. Store at -20 °C. Stable for 6 months from date of receipt.

Species Specificity:

Human, Mouse

Tested Applications:

WB: 1:1,000-1:5,000 (detect endogenous protein*)

*: The apparent protein size on WB may be different from the calculated M.W. due to modifications.

Product Data:

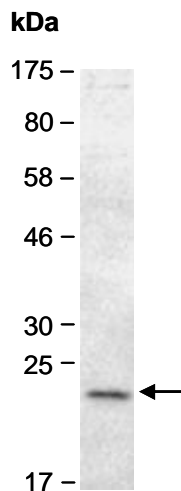


Fig 1. Western blot of total cell extracts from mouse brain, using Ab (R0200-1) at RT for 2 h.