



Order: (888)-282-5810 (Phone)
(818)-707-0392 (Fax)
order@abiocode.com
Web: www.Abiocode.com

KDM4A (C) Antibody, Rabbit Polyclonal

Cat#: R0229-2

Quantity: 100 ul

Predicted M.W.: 121 kDa

Lot#: Refer to vial

Application: WB

Uniprot ID: O75164

Background:

Lysine-specific demethylase 4A (KDM4A) is a histone demethylase that specifically demethylates 'Lys-9' and 'Lys-36' residues of histone H3, thereby playing a central role in histone code. KDM4A does not demethylate histone H3 'Lys-4', H3 'Lys-27' nor H4 'Lys-20'. KDM4A demethylates trimethylated H3 'Lys-9' and H3 'Lys-36' residue, while it has no activity on mono- and dimethylated residues. KDM4A has been shown to participate in transcriptional repression of ASCL2 and E2F-responsive promoters via the recruitment of histone deacetylases and NCOR1, respectively.

Other Names:

Lysine-specific demethylase 4A, JmjC domain-containing histone demethylation protein 3A, Jumonji domain-containing protein 2A, JHDM3A, JMJD2, JMJD2A, KIAA0677

Source and Purity:

Rabbit polyclonal antibodies were produced by immunizing animals with a GST-fusion protein containing the C-terminal region of human KDM4A. Antibodies were purified by affinity purification using immunogen.

Storage Buffer and Condition:

Supplied in 1 x PBS (pH 7.4), 100 ug/ml BSA, 40% Glycerol, 0.01% NaN₃. Store at -20 °C. Stable for 6 months from date of receipt.

Species Specificity:

Human

Tested Applications:

WB: 1:1,000-1:5,000 (detect endogenous protein*)

*: The apparent protein size on WB may be different from the calculated M.W. due to modifications.

Product Data:

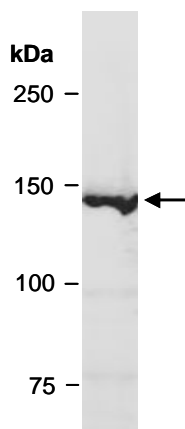


Fig 1. Western blot of total cell extracts from human HeLa, using Ab (R0229-2) at RT for 2 h.