



Order: (888)-282-5810 (Phone)  
(818)-707-0392 (Fax)  
[order@abiocode.com](mailto:order@abiocode.com)  
Web: [www.Abiocode.com](http://www.Abiocode.com)

---

## LCP2 (C2) Antibody, Rabbit Polyclonal

**Cat#: R0534-5**

**Quantity: 100 ul**

**Predicted | Observed M.W.: 60 | 70 kDa**

**Lot#: Refer to vial**

**Application: WB**

**Uniprot ID: Q60787**

### **Background:**

LCP2 is a signal-transducing adaptor protein and a substrate of the ZAP-70 protein tyrosine kinase following T cell receptor ligation. LCP2 plays a positive role in promoting T cell development and activation as well as mast cell and platelet function. LCP2 has been shown to interact with SHB, PICG1, PTPN6, LYN, NCK1, Cbl gene, GRAP2, PIK3R1, Grb2, ITK and VAV1. LCP2 is highly expressed in spleen, thymus and peripheral blood leukocytes. LCP2 is also highly expressed in T-cell and monocytic cell lines.

### **Other Names:**

Lymphocyte cytosolic protein 2, SH2 domain-containing leukocyte protein of 76 kDa, SLP76

### **Source and Purity:**

Rabbit polyclonal antibodies were produced by immunizing animals with a GST-fusion protein containing the C-terminal region of mouse LCP2. Antibodies were purified by affinity purification using immunogen.

### **Storage Buffer and Condition:**

Supplied in 1 x PBS (pH 7.4), 100 ug/ml BSA, 40% Glycerol, 0.01% NaN<sub>3</sub>. Store at -20 °C. Stable for 6 months from date of receipt.

### **Species Specificity:**

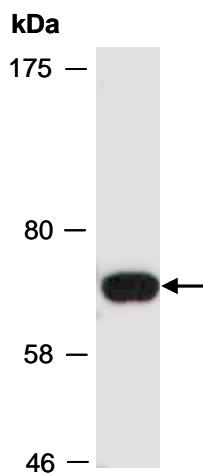
Mouse

### **Tested Applications:**

WB: 1:1,000-1:3,000 (detect endogenous protein\*)

\*: The apparent protein size on WB may be different from the calculated M.W. due to modifications.

**Product Data:**



**Fig 1.** Western blot of total cell extracts from mouse thymus, using anti-LCP2 (C2) (R0534-5) at RT for 2 h.