



Order: (888)-282-5810 (Phone)  
(818)-707-0392 (Fax)  
[order@abiocode.com](mailto:order@abiocode.com)  
Web: [www.Abiocode.com](http://www.Abiocode.com)

---

## IL2RB (C) Antibody, Rabbit Polyclonal

**Cat#: R0590-3**

**Quantity: 100 ul**

**Predicted | Observed MW: 61 kDa**

**Lot#: Refer to vial**

**Application: WB**

**Uniprot ID: P16297**

### **Background:**

Interleukin-2 receptor subunit beta (IL2RB) is a single-pass type I membrane protein, which belongs to the type I cytokine receptor family. IL2RB is a receptor for interleukin-2 and contains 1 fibronectin type-III domain. IL2R exists in 3 different forms: a high affinity dimer of the alpha and beta subunits, an intermediate affinity monomer (beta subunit), and a low affinity monomer (alpha subunit). The high and intermediate affinity forms also associate with a gamma subunit. IL2RB is involved in receptor mediated endocytosis and transduces the mitogenic signals of IL2.

### **Other Names:**

Interleukin-2 receptor subunit beta, IL-2 receptor subunit beta, IL-2R subunit beta, IL-2RB, High affinity IL-2 receptor subunit beta, p70-75, p75, CD122

### **Source and Purity:**

Rabbit polyclonal antibodies were produced by immunizing animals with a GST-fusion protein containing the C-terminal region of mouse IL2RB. Antibodies were purified by affinity purification using immunogen.

### **Storage Buffer and Condition:**

Supplied in 1 x PBS (pH 7.4), 100 ug/ml BSA, 40% Glycerol, 0.01% NaN<sub>3</sub>. Store at -20 °C. Stable for 6 months from date of receipt.

### **Species Specificity:**

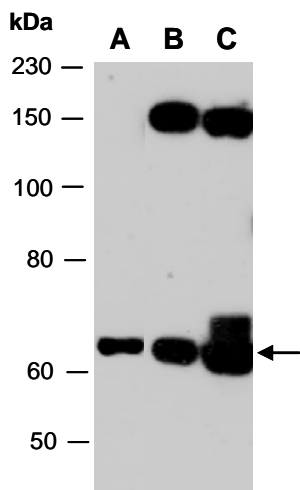
Human, Mouse

### **Tested Applications:**

WB: 1:1,000-1:3,000 (detect endogenous protein\*)

\*: The apparent protein size on WB may be different from the calculated M.W. due to modifications.

**Product Data:**



**Fig 1.** Western blot of total cell extracts from (A) mouse brain, (B) mouse thymus, (C) human HepG2; using anti-IL2RB (C) (R0590-3) at RT for 2 h.