



Order: (888)-282-5810 (Phone)  
(818)-707-0392 (Fax)  
[order@abiocode.com](mailto:order@abiocode.com)  
Web: [www.Abiocode.com](http://www.Abiocode.com)

---

## **CUL5 (N) Antibody, Rabbit Polyclonal**

**Cat#: R0882-1**

**Quantity: 100 ul**

**Predicted | Observed MW: 91 kDa**

**Lot#: Refer to vial**

**Application: WB**

**Uniprot ID: Q93034**

### **Background:**

Cullin-5 (CUL5) belongs to the cullin family. CUL5 is a core component of multiple SCF-like ECS (Elongin-Cullin 2/5-SOCS-box protein) E3 ubiquitin-protein ligase complexes, which mediate the ubiquitination and subsequent proteasomal degradation of target proteins. As a scaffold protein, CUL5 may contribute to catalysis through positioning of the substrate and the ubiquitin-conjugating enzyme. The functional specificity of the E3 ubiquitin-protein ligase complex depends on the variable substrate recognition component. ECS(SOCS1) seems to direct ubiquitination of JAK2. CUL5 seems to be involved in proteasomal degradation of p53/TP53 stimulated by adenovirus E1B-55 kDa protein and may form a cell surface vasopressin receptor.

### **Other Names:**

Cullin-5, CUL-5, Vasopressin-activated calcium-mobilizing receptor 1, VACM-1, VACM1

### **Source and Purity:**

Rabbit polyclonal antibodies were produced by immunizing animals with a GST-fusion protein containing the N-terminal region of human CUL5. Antibodies were purified by affinity purification using immunogen.

### **Storage Buffer and Condition:**

Supplied in 1 x PBS (pH 7.4), 100 ug/ml BSA, 40% Glycerol, 0.01% NaN<sub>3</sub>. Store at -20 °C. Stable for 6 months from date of receipt.

### **Species Specificity:**

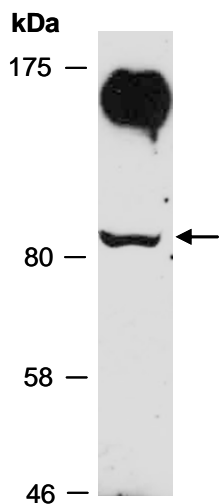
Human, Mouse

### **Tested Applications:**

WB: 1:1,000-1:3,000 (detect endogenous protein\*)

\*: The apparent protein size on WB may be different from the calculated M.W. due to modifications.

**Product Data:**



**Fig 1.** Western blot of total cell extracts from mouse brain; using anti-CUL5 (N) (R0882-1) at RT for 2 h.