



Order: (888)-282-5810 (Phone)
(818)-707-0392 (Fax)
order@abiocode.com
Web: www.Abiocode.com

CADM2 (N) Antibody, Rabbit Polyclonal

Cat#: R0946-1

Quantity: 100 ul

Predicted | Observed MW: 48 | 58 kDa

Lot#: Refer to vial

Application: WB

Uniprot ID: Q8N3J6

Background:

Cell adhesion molecule 2 (CADM2) is a single-pass type I membrane protein belonging to the nectin family. CADM2 is an adhesion molecule that engages in homo- and heterophilic interactions with the other nectin-like family members, leading to cell aggregation. CADM2 is important for synapse organization, providing regulated trans-synaptic adhesion. CADM2 preferentially binds to oligodendrocytes.

Other Names:

Cell adhesion molecule 2, Immunoglobulin superfamily member 4D, IgSF4D, Nectin-like protein 3, NECL-3, Synaptic cell adhesion molecule 2, SynCAM 2, IGSF4D, NECL3

Source and Purity:

Rabbit polyclonal antibodies were produced by immunizing animals with a GST-fusion protein containing the N-terminal region of human CADM2. Antibodies were purified by affinity purification using immunogen.

Storage Buffer and Condition:

Supplied in 1 x PBS (pH 7.4), 100 ug/ml BSA, 40% Glycerol, 0.01% NaN₃. Store at -20 °C. Stable for 6 months from date of receipt.

Species Specificity:

Human, Mouse

Tested Applications:

WB: 1:1,000-1:3,000 (detect endogenous protein*)

*: The apparent protein size on WB may be different from the calculated M.W. due to modifications.

Product Data:

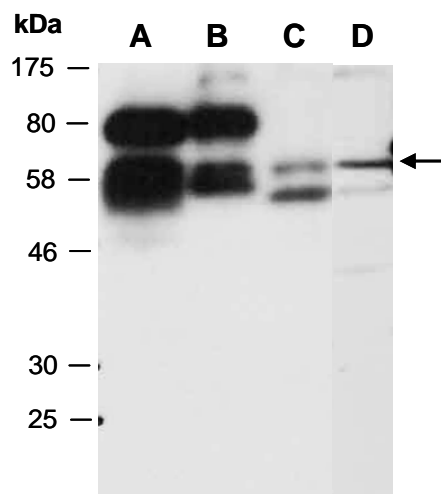


Fig 1. Western blot of total cell extracts from (A) mouse brain, (B) mouse thymus, (C) human HeLa, (D) human Jurkat; using anti-CADM2 (N) (R0946-1) at RT for 2 h.