



Order: (888)-282-5810 (Phone)
(818)-707-0392 (Fax)
order@abiocode.com
Web: www.Abiocode.com

NKX2-6 (N2) Antibody, Rabbit Polyclonal

Cat#: R1816-3

Quantity: 100 ul

Predicted | Observed MW: 32 kDa

Lot#: Refer to vial

Application: WB

Uniprot ID: P43688

Background:

NKX2-6 is a homeobox-containing protein that belongs to the NK-2 homeobox family. NKX2-6 is a vertebrate homolog of Drosophila homeobox-containing protein called 'tinman', which has been shown to be essential for development of the heart-like dorsal vessel. In conjunction with the related protein NKX2-5, NKX2-6 may play a role in both pharyngeal and cardiac embryonic development. Mutations in NKX2-6 are associated with persistent truncus arteriosus.

Other Names:

Homeobox protein Nkx-2.6, Homeobox protein NK-2 homolog F, Nkx-2.6, Nkx2f

Source and Purity:

Rabbit polyclonal antibodies were produced by immunizing animals with a GST-fusion protein containing the N-terminal region of mouse NKX2-6. Antibodies were purified by affinity purification using immunogen.

Storage Buffer and Condition:

Supplied in 1 x PBS (pH 7.4), 100 ug/ml BSA, 40% Glycerol, 0.01% NaN₃. Store at -20 °C. Stable for 6 months from date of receipt.

Species Specificity:

Human, Mouse

Tested Applications:

WB: 1:1,000-1:3,000 (detect endogenous protein*)

*: The apparent protein size on WB may be different from the calculated M.W. due to modifications.

Product Data:

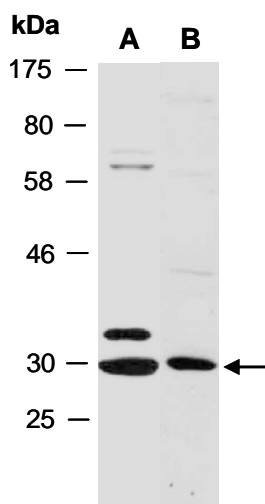


Fig 1. Western blot of total cell extracts from (A) human HeLa, (B) mouse brain; using anti-NKX2-6 (N2) (R1816-3) at RT for 2 h.