



Order: (888)-282-5810 (Phone)  
(818)-707-0392 (Fax)  
[order@abiocode.com](mailto:order@abiocode.com)  
Web: [www.Abiocode.com](http://www.Abiocode.com)

---

## ESRRB (C) Antibody, Rabbit Polyclonal

**Cat#:** R2079-2

**Quantity:** 100 ul

**Predicted | Observed MW:** 56 | 65 kDa

**Lot#:** Refer to vial

**Application:** WB

**Uniprot ID:** O95718

### Background:

Estrogen-related receptor beta (ESRRB), also known as NR3B2 (nuclear receptor subfamily 3, group B, member 2), is a nuclear receptor that belongs to the nuclear hormone receptor family, NR3 subfamily. ESRRB contains 1 nuclear receptor DNA-binding domain and can bind DNA as a monomer. ESRRB shares sequence similarity with Estrogen receptor 1 (ESR1) and may regulate ESR1 transcriptional activity. A similar protein in mouse plays an essential role in placental development. Defects in ESRRB are the cause of deafness autosomal recessive type 35 (DFNB35)

### Other Names:

Steroid hormone receptor ERR2, ERR beta-2, Estrogen receptor-like 2, Estrogen-related receptor beta, ERR-beta, Nuclear receptor subfamily 3 group B member 2, ERRB2, ESRL2, NR3B2

### Source and Purity:

Rabbit polyclonal antibodies were produced by immunizing animals with a GST-fusion protein containing the C-terminal region of human ESRRB. Antibodies were purified by affinity purification using immunogen.

### Storage Buffer and Condition:

Supplied in 1 x PBS (pH 7.4), 100 ug/ml BSA, 40% Glycerol, 0.01% NaN<sub>3</sub>. Store at -20 °C. Stable for 6 months from date of receipt.

### Species Specificity:

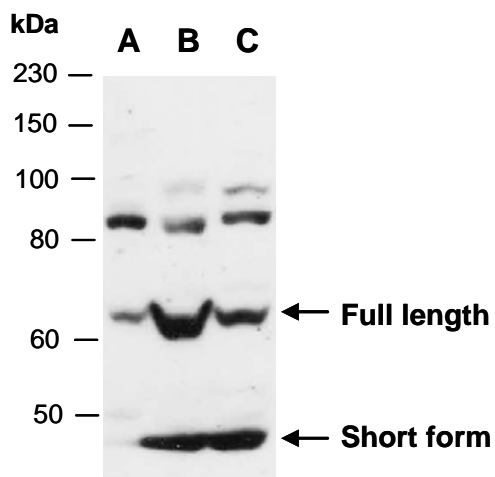
Human, Mouse

### Tested Applications:

WB: 1:1,000-1:3,000 (detect endogenous protein\*)

\*: The apparent protein size on WB may be different from the calculated M.W. due to modifications.

**Product Data:**



**Fig 1.** Western blot of total cell extracts from (A) mouse thymus, (B) human HepG2, (C) human Jurkat; using anti-ESRRB (C) (R2079-2) at RT for 2 h.