



Order: (888)-282-5810 (Phone)  
(818)-707-0392 (Fax)  
[order@abiocode.com](mailto:order@abiocode.com)  
Web: [www.Abiocode.com](http://www.Abiocode.com)

---

## **RORA (C) Antibody, Rabbit Polyclonal**

**Cat#: R0227-1**

**Quantity: 100 ul**

**Predicted | Observed M.W.: 59 | 75 kDa**

**Lot#: Refer to vial**

**Application: WB**

**Uniprot ID: P51448**

### **Background:**

Nuclear receptor ROR-alpha (RORA) is an orphan nuclear receptor that belongs to the nuclear hormone receptor family, NR1 subfamily. RORA binds DNA as a monomer to hormone response elements (HRE) containing a single core motif half-site preceded by a short A-T-rich sequence. RORA regulates a number of genes involved in lipid metabolism, such as apolipoproteins AI, APOA5, CIII, CYP71 and PPARgamma; in cerebellum and photoreceptor development including PCP2, OPN1SW, OPN1SM AND ARR3; in circadian rhythm with BMAL1, and skeletal muscle development with MYOD1. RORA is a possible receptor for cholesterol or one of its derivatives.

### **Other Names:**

Nuclear receptor ROR-alpha, Nuclear receptor RZR-alpha, Nuclear receptor subfamily 1 group F member 1, Retinoid-related orphan receptor-alpha, Nr1f1, Rzra

### **Source and Purity:**

Rabbit polyclonal antibodies were produced by immunizing animals with a GST-fusion protein containing the C-terminal region of mouse RORA. Antibodies were purified by affinity purification using immunogen.

### **Storage Buffer and Condition:**

Supplied in 1 x PBS (pH 7.4), 100 ug/ml BSA, 40% Glycerol, 0.01% NaN<sub>3</sub>. Store at -20 °C. Stable for 6 months from date of receipt.

### **Species Specificity:**

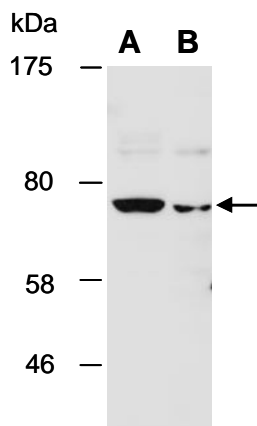
Human, Mouse

### **Tested Applications:**

WB: 1:1,000-1:5,000 (detect endogenous protein\*)

\*: The apparent protein size on WB may be different from the calculated M.W. due to modifications.

**Product Data:**



**Fig 1.** Western blot of total cell extracts from (A) human Jurkat, (B) mouse thymus, using Ab (R0227-1) at RT for 2 h. The observed M.W. of RORA is approximately 75 kD.