



Order: (888)-282-5810 (Phone)
(818)-707-0392 (Fax)
order@abiocode.com
Web: www.Abiocode.com

RPA2 (C) Antibody, Rabbit Polyclonal

Cat#: R1610-2

Quantity: 100 ul

Predicted | Observed M.W.: 30 kDa

Lot#: Refer to vial

Application: WB

Uniprot ID: P15927

Background:

RPA2 is required for DNA recombination, repair and replication. RPA2 functions as component of the alternative replication protein A complex, which binds single-stranded DNA and plays a role in DNA repair.

Other Names:

REPA2, RPA32, RPA34

Source and Purity:

Rabbit polyclonal antibodies were produced by immunizing animals with a GST-fusion protein containing the C-terminal region of human RPA2. Antibodies were purified by affinity purification using immunogen.

Storage Buffer and Condition:

Supplied in 1 x PBS (pH 7.4), 100 ug/ml BSA, 40% Glycerol, 0.01% NaN₃. Store at -20 °C. Stable for 6 months from date of receipt.

Species Specificity:

Human, Mouse

Tested Applications:

WB: 1:1,000-1:3,000 (detect endogenous protein*)

*: The apparent protein size on WB may be different from the calculated M.W. due to modifications.

Product Data:

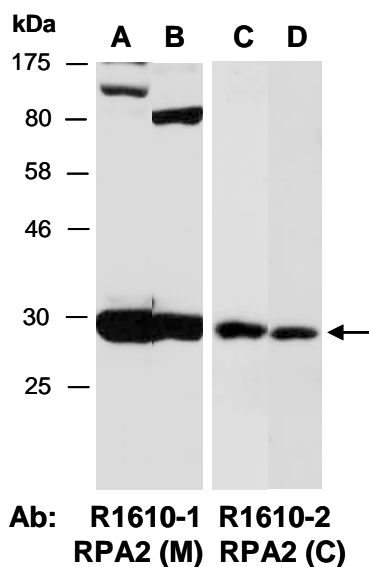


Fig 1. Western blot of total cell extracts from (A, C) mouse thymus, (B) human MDA-MB231; using 2 independent Abs against 2 distinct regions of human RPA2 at RT for 2 h.