



Order: (888)-282-5810 (Phone)  
(818)-707-0392 (Fax)  
[order@abiocode.com](mailto:order@abiocode.com)  
Web: [www.Abiocode.com](http://www.Abiocode.com)

---

## **MMP2 (C2) Antibody, Rabbit Polyclonal**

**Cat#: R1046-2**

**Quantity: 100 ul**

**Predicted | Observed M.W.: 74 kDa**

**Lot#: Refer to vial**

**Application: WB**

**Uniprot ID: P08253**

### **Background:**

MMP2 is involved in the breakdown of extracellular matrix in normal physiological processes, such as embryonic development, reproduction, and tissue remodeling, as well as in disease processes, such as arthritis and metastasis. Defects in MMP2 are the cause of Torg-Winchester syndrome.

### **Other Names:**

CLG4, CLG4A, TBE-1

### **Source and Purity:**

Rabbit polyclonal antibodies were produced by immunizing animals with a GST-fusion protein containing the C-terminal region of human MMP2. Antibodies were purified by affinity purification using immunogen.

### **Storage Buffer and Condition:**

Supplied in 1 x PBS (pH 7.4), 100 ug/ml BSA, 40% Glycerol, 0.01% NaN<sub>3</sub>. Store at -20 °C. Stable for 6 months from date of receipt.

### **Species Specificity:**

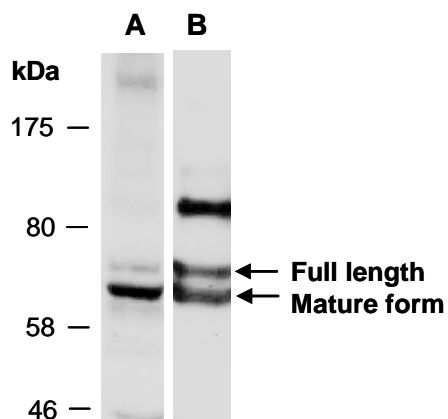
Human, Mouse

### **Tested Applications:**

WB: 1:1,000-1:3,000 (detect endogenous protein\*)

\*: The apparent protein size on WB may be different from the calculated M.W. due to modifications.

**Product Data:**



**Fig 1.** Western blot of total cell extracts from mouse brain, using 2 independent Abs against 2 distinct regions of human MMP2 [A: MMP2 (C2) R1046-2; B: MMP2 (C1) (R1046-1)] at RT for 2 h.