



Order: (888)-282-5810 (Phone)
(818)-707-0392 (Fax)
order@abiocode.com
Web: www.Abiocode.com

RAC1 (C) Antibody, Rabbit Polyclonal

Cat#: R1469-2

Quantity: 100 ul

Predicted | Observed M.W.: 21 | 29 kDa

Lot#: Refer to vial

Application: WB

Uniprot ID: P63000

Background:

Ras-related C3 botulinum toxin substrate 1 (RAC1) belongs to the small GTPase superfamily and the Rho family. RAC1 is a plasma membrane-associated small GTPase which cycles between active GTP-bound and inactive GDP-bound states. In its active state, RAC1 binds to a variety of effector proteins to regulate cellular responses such as secretory processes, phagocytosis of apoptotic cells, epithelial cell polarization and growth-factor induced formation of membrane ruffles. RAC1 p21/rho GDI heterodimer is the active component of the cytosolic factor sigma 1, which is involved in stimulation of the NADPH oxidase activity in macrophages. RAC1 is essential for the SPATA13-mediated regulation of cell migration and adhesion assembly and disassembly. Additionally, RAC1 stimulates PKN2 kinase activity. In concert with RAB7A, RAC1 plays a role in regulating the formation of RBs (ruffled borders) in osteoclasts. In glioma cells, RAC1 promotes cell migration and invasion.

Other Names:

Ras-related C3 botulinum toxin substrate 1, Cell migration-inducing gene 5 protein, Ras-like protein TC25, p21-Rac1, TC25

Source and Purity:

Rabbit polyclonal antibodies were produced by immunizing animals with a GST-fusion protein containing the C-terminal region of human RAC1. Antibodies were purified by affinity purification using immunogen.

Storage Buffer and Condition:

Supplied in 1 x PBS (pH 7.4), 100 ug/ml BSA, 40% Glycerol, 0.01% NaN₃. Store at -20 °C. Stable for 6 months from date of receipt.

Species Specificity:

Human, Mouse

Tested Applications:

WB: 1:1,000-1:3,000 (detect endogenous protein*)

*: The apparent protein size on WB may be different from the calculated M.W. due to modifications.

For research use only. Not for therapeutic or diagnostic purposes.
Abiocode, Inc., 29397 Agoura Rd., Ste 106, Agoura Hills, CA 91301

Product Data:

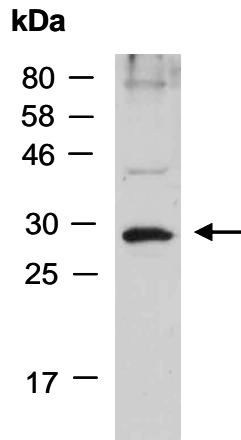


Fig 1. Western blot of total cell extracts from mouse brain, using anti-RAC1 (C) (R1469-2) at RT for 2 h.