



Order: (888)-282-5810 (Phone)
(818)-707-0392 (Fax)
order@abiocode.com
Web: www.Abiocode.com

RORC (M) Antibody, Rabbit Polyclonal

Cat#: R2148-3

Quantity: 100 ul

Predicted | Observed M.W.: 58 | 52 kDa

Lot#: Refer to vial

Application: WB

Uniprot ID: P51450

Background:

Nuclear receptor ROR-gamma (RORC) belongs to the nuclear hormone receptor family and the NR1 subfamily. RORC is a possible nuclear receptor for hydroxycholesterols, the binding of which strongly promotes coactivators recruitment. RORC is essential for thymopoiesis and the development of several secondary lymphoid tissues, including lymph nodes. Additionally, RORC is involved in lineage specification of uncommitted CD4⁺ T-helper cells into Th17 cells, and it regulates the expression of several components of the circadian clock.

Other Names:

Nuclear receptor ROR-gamma, Nuclear receptor RZR-gamma, Nuclear receptor subfamily 1 group F member 3, Retinoid-related orphan receptor-gamma, NR1F3, RORG, RZRG

Source and Purity:

Rabbit polyclonal antibodies were produced by immunizing animals with a GST-fusion protein containing the middle region of mouse RORC. Antibodies were purified by affinity purification using immunogen.

Storage Buffer and Condition:

Supplied in 1 x PBS (pH 7.4), 100 ug/ml BSA, 40% Glycerol, 0.01% NaN₃. Store at -20 °C. Stable for 6 months from date of receipt.

Species Specificity:

Human, Mouse

Tested Applications:

WB: 1:1,000-1:3,000 (detect endogenous protein*)

*: The apparent protein size on WB may be different from the calculated M.W. due to modifications.

Product Data:

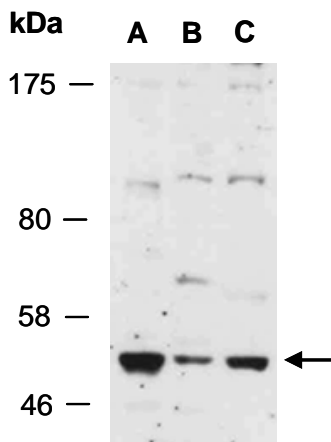


Fig 1. Western blot of total cell extracts from (A) mouse thymus, (B) human HeLa, (C) human Jurkat; using anti-RORC (M) (R2148-3) at RT for 2 h. This Ab detects a 52 kD form of RORC.