



Order: (888)-282-5810 (Phone)  
(818)-707-0392 (Fax)  
[order@abiocode.com](mailto:order@abiocode.com)  
Web: [www.Abiocode.com](http://www.Abiocode.com)

---

## **SSU72 (M) Antibody, Rabbit Polyclonal**

**Cat#: R2996-2**

**Quantity: 100 ul**

**Predicted | Observed M.W.: 23 | 28 kDa**

**Lot#: Refer to vial**

**Application: WB**

**Uniprot ID: Q9NP77**

### **Background:**

RNA polymerase II subunit A C-terminal domain phosphatase SSU72 belongs to the SSU72 phosphatase family. SSU72 is localized in both cytoplasm and nucleus, but predominantly in the cytosol. SSU72 may be involved in the C-terminal domain of RNA polymerase II dephosphorylation, RNA processing and termination.

### **Other Names:**

RNA polymerase II subunit A C-terminal domain phosphatase SSU72, CTD phosphatase SSU72, HSPC182, PNAS-120

### **Source and Purity:**

Rabbit polyclonal antibodies were produced by immunizing animals with a GST-fusion protein containing the middle region of human SSU72. Antibodies were purified by affinity purification using immunogen.

### **Storage Buffer and Condition:**

Supplied in 1 x PBS (pH 7.4), 100 ug/ml BSA, 40% Glycerol, 0.01% NaN<sub>3</sub>. Store at -20 °C. Stable for 6 months from date of receipt.

### **Species Specificity:**

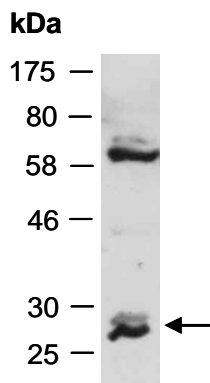
Human, Mouse

### **Tested Applications:**

WB: 1:1,000-1:3,000 (detect endogenous protein\*)

\*: The apparent protein size on WB may be different from the calculated M.W. due to modifications.

**Product Data:**



**Fig 1.** Western blot of total cell extracts from Mouse brain; using anti-SSU72 (M) (R2996-2) at RT for 2 h.