



Order: (888)-282-5810 (Phone)
(818)-707-0392 (Fax)
order@abiocode.com
Web: www.Abiocode.com

MEF2A (N3) Antibody, Rabbit Polyclonal

Cat#: R1780-1

Lot#: Refer to vial

Quantity: 100 ul

Application: WB

Predicted | Observed M.W.: 54 kDa

Uniprot ID: Q60929

Background:

Myocyte-specific enhancer factor 2A (MEF2A) belongs to the MEF2 family and is a transcriptional activator which binds specifically to the MEF2 element, 5'-YTA[AT]₄TAR-3', found in numerous muscle-specific genes. MEF2A is also involved in the activation of numerous growth factor- and stress-induced genes. Additionally, MEF2A mediates cellular functions not only in skeletal and cardiac muscle development, but also in neuronal differentiation and survival. MEF2A plays diverse roles in the control of cell growth, survival and apoptosis via p38 MAPK signaling in muscle-specific and/or growth factor-related transcription. In cerebellar granule neurons, phosphorylated and sumoylated MEF2A represses transcription of NUR77 promoting synaptic differentiation.

Other Names:

Myocyte-specific enhancer factor 2A

Source and Purity:

Rabbit polyclonal antibodies were produced by immunizing animals with a GST-fusion protein containing the N-terminal region of mouse MEF2A. Antibodies were purified by affinity purification using immunogen.

Storage Buffer and Condition:

Supplied in 1 x PBS (pH 7.4), 100 ug/ml BSA, 40% Glycerol, 0.01% NaN₃. Store at -20 °C. Stable for 6 months from date of receipt.

Species Specificity:

Human, Mouse

Tested Applications:

WB: 1:1,000-1:3,000 (detect endogenous protein*)

*: The apparent protein size on WB may be different from the calculated M.W. due to modifications.

Product Data:

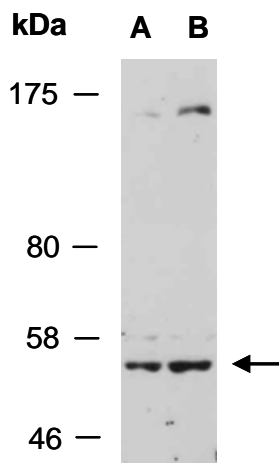


Fig 1. Western blot of total cell extracts from (A) human HeLa, (B) human Jurkat; using anti-MEF2A (N3) (R1780-1) at RT for 2 h.