



Order: (888)-282-5810 (Phone)  
(818)-707-0392 (Fax)  
[order@abiocode.com](mailto:order@abiocode.com)  
Web: [www.Abiocode.com](http://www.Abiocode.com)

---

## **RALBP1 (C) Antibody, Rabbit Polyclonal**

**Cat#: R1855-2**

**Quantity: 100 ul**

**Predicted | Observed M.W.: 76 | 100 kDa**

**Lot#: Refer to vial**

**Application: WB**

**Uniprot ID: Q15311**

### **Background:**

RALBP1 activates specifically hydrolysis of GTP bound to RAC1 and CDC42, but not RALA. Mediates ATP-dependent transport of S-(2,4-dinitrophenyl)-glutathione (DNP-SG) and doxorubicin (DOX) and is the major ATP-dependent transporter of glutathione conjugates of electrophiles (GS-E) and DOX in erythrocytes. RALBP1 also catalyzes transport of glutathione conjugates and xenobiotics, and may contribute to the multidrug resistance phenomenon.

### **Other Names:**

RalA-binding protein 1, 76 kDa Ral-interacting protein, Dinitrophenyl S-glutathione ATPase, Ral-interacting protein 1, RLIP1, RLIP76

### **Source and Purity:**

Rabbit polyclonal antibodies were produced by immunizing animals with a GST-fusion protein containing the N-terminal region of human RALBP1. Antibodies were purified by affinity purification using immunogen.

### **Storage Buffer and Condition:**

Supplied in 1 x PBS (pH 7.4), 100 ug/ml BSA, 40% Glycerol, 0.01% NaN<sub>3</sub>. Store at -20 °C. Stable for 6 months from date of receipt.

### **Species Specificity:**

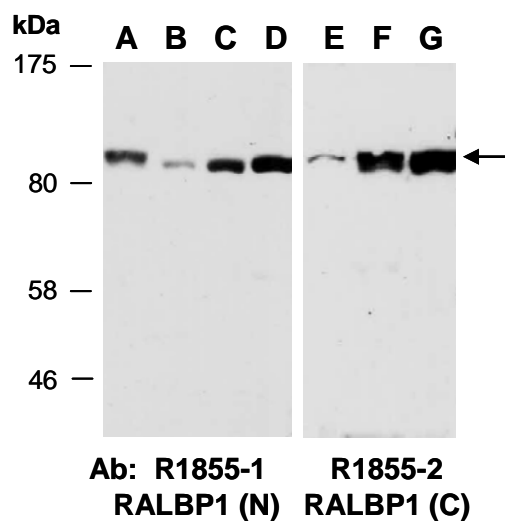
Human, Mouse

### **Tested Applications:**

WB: 1:1,000-1:3,000 (detect endogenous protein\*)

\*: The apparent protein size on WB may be different from the calculated M.W. due to modifications.

**Product Data:**



**Fig 1.** Western blot of total cell extracts from (A) mouse brain, (B, E) mouse thymus, (C, F) human HeLa, (D, G) human Jurkat; using 2 independent Abs against 2 distinct regions of human RALBP1 at RT for 2 h.