



Order: (888)-282-5810 (Phone)  
(818)-707-0392 (Fax)  
[order@abiocode.com](mailto:order@abiocode.com)  
Web: [www.Abiocode.com](http://www.Abiocode.com)

---

## **CYBB (C1) Antibody, Rabbit Polyclonal**

**Cat#: R2092-2**

**Quantity: 100 ul**

**Predicted | Observed M.W.: 65 | 91 kDa**

**Lot#: Refer to vial**

**Application: WB**

**Uniprot ID: P04839**

### **Background:**

CYBB is the critical component of the membrane-bound oxidase of phagocytes that generates superoxide. It is the terminal component of a respiratory chain that transfers single electrons from cytoplasmic NADPH across the plasma membrane to molecular oxygen on the exterior. Also functions as a voltage-gated proton channel that mediates the H<sup>+</sup> currents of resting phagocytes. CYBB participates in the regulation of cellular pH and is blocked by zinc. Defects in CYBB are a cause of granulomatous disease.

### **Other Names:**

CGD91-phox, Cytochrome b(558) subunit beta, Heme-binding membrane glycoprotein gp91phox, NADPH oxidase 2, Neutrophil cytochrome b 91 kDa polypeptide, Superoxide-generating NADPH oxidase heavy chain subunit, gp91-1, gp91-phox, p22 phagocyte B-cytochrome, NOX2

### **Source and Purity:**

Rabbit polyclonal antibodies were produced by immunizing animals with a GST-fusion protein containing the C-terminal region of human CYBB. Antibodies were purified by affinity purification using immunogen.

### **Storage Buffer and Condition:**

Supplied in 1 x PBS (pH 7.4), 100 ug/ml BSA, 40% Glycerol, 0.01% NaN<sub>3</sub>. Store at -20 °C. Stable for 6 months from date of receipt.

### **Species Specificity:**

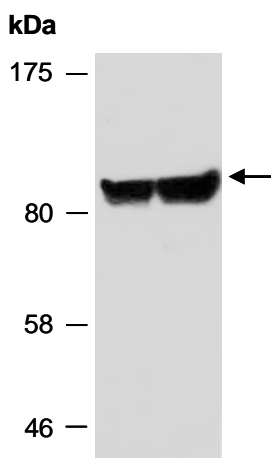
Human

### **Tested Applications:**

WB: 1:1,000-1:3,000 (detect endogenous protein\*)

\*: The apparent protein size on WB may be different from the calculated M.W. due to modifications.

**Product Data:**



**Fig 1.** Western blot of total cell extracts from (A) human HeLa, (B) human Jurkat, using anti-CYBB (C1) (R2092-2) at RT for 2 h.