



Order: (888)-282-5810 (Phone)  
(818)-707-0392 (Fax)  
[order@abiocode.com](mailto:order@abiocode.com)  
Web: [www.Abiocode.com](http://www.Abiocode.com)

---

## **RNF4 (M) Antibody, Rabbit Polyclonal**

**Cat#: R2222-4**

**Quantity: 100 ul**

**Predicted | Observed M.W.: 22 | 40 kDa**

**Lot#: Refer to vial**

**Application: WB**

**Uniprot ID: Q9QZS2**

### **Background:**

RNF4 binds polysumoylated chains covalently attached to proteins and mediates 'Lys-6'-, 'Lys-11'-, 'Lys-48'- and 'Lys-63'-linked polyubiquitination of those substrates and their subsequent targeting to the proteasome for degradation. RNF4 regulates the degradation of several proteins including PML and the transcriptional activator PEA3. RNF4 is involved in chromosome alignment and spindle assembly, it regulates the kinetochore CENPH-CENPI-CENPK complex by targeting polysumoylated CENPI to proteasomal degradation. RNF4 regulates the cellular responses to hypoxia and heat shock through degradation of respectively EPAS1 and PARP1. Alternatively, RNF4 may also bind DNA/nucleosomes and have a more direct role in the regulation of transcription for instance enhancing basal transcription and steroid receptor-mediated transcriptional activation. RNF4 Expression is detected from embryonic day 7 and continues throughout development and into adulthood.

### **Other Names:**

RING finger protein 4, RNF4, RES4-26, SLX5, SNURF

### **Source and Purity:**

Rabbit polyclonal antibodies were produced by immunizing animals with a GST-fusion protein containing the middle region of mouse RNF4. Antibodies were purified by affinity purification using immunogen.

### **Storage Buffer and Condition:**

Supplied in 1 x PBS (pH 7.4), 100 ug/ml BSA, 40% Glycerol, 0.01% NaN<sub>3</sub>. Store at -20 °C. Stable for 6 months from date of receipt.

### **Species Specificity:**

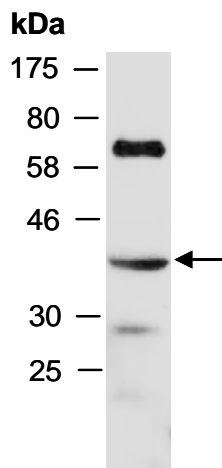
Human, Mouse

### **Tested Applications:**

WB: 1:1,000-1:3,000 (detect endogenous protein\*)

\*: The apparent protein size on WB may be different from the calculated M.W. due to modifications.

**Product Data:**



**Fig 1.** Western blot of total cell extracts from mouse brain, using anti-RNF4 (M) (R2222-4) at RT for 2 h.