



Order: (888)-282-5810 (Phone)
(818)-707-0392 (Fax)
order@abiocode.com
Web: www.Abiocode.com

PRKCE (C) Antibody, Rabbit Polyclonal

Cat#: R2264-2b

Quantity: 100 ul

Predicted | Observed M.W.: 84 | 100 kDa

Lot#: Refer to vial

Application: WB

Uniprot ID: Q02156

Background:

PRKCE, protein kinase C epsilon type, is a family of serine- and threonine-specific protein kinases that can be activated by calcium and the second messenger diacylglycerol. PRKCE phosphorylates a wide variety of protein targets and are known to be involved in diverse cellular signaling pathways. PRKCE also serves as major receptors for phorbol esters, a class of tumor promoters. PRKCE has also been shown to be involved in many different cellular functions, such as neuron channel activation, apoptosis, cardioprotection from ischemia, heat shock response, as well as insulin exocytosis. Knockout studies in mice suggest that this kinase is important for lipopolysaccharide (LPS)-mediated signaling in activated macrophages and may also play a role in controlling anxiety-like behavior.

Other Names:

nPKC-epsilon, PKCE

Source and Purity:

Rabbit polyclonal antibodies were produced by immunizing animals with a GST-fusion protein containing the C-terminal region of human PRKCE. Antibodies were purified by affinity purification using immunogen.

Storage Buffer and Condition:

Supplied in 1 x PBS (pH 7.4), 100 ug/ml BSA, 40% Glycerol, 0.01% NaN₃. Store at -20 °C. Stable for 6 months from date of receipt.

Species Specificity:

Human, Mouse

Tested Applications:

WB: 1:1,000-1:3,000 (detect endogenous protein*)

*: The apparent protein size on WB may be different from the calculated M.W. due to modifications.

Product Data:

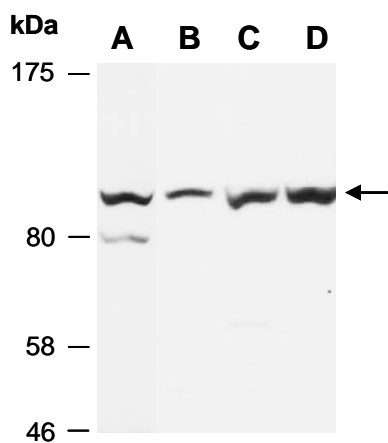


Fig 1. Western blot of total cell extracts from (A) mouse brain, (B) mouse thymus, (C) human HeLa, (D) human Jurkat; using anti-PRKCE (C) (R2264-2) at RT for 2 h. This Ab preferentially recognizes the 100 kD form of PRKCE.