



Order: (888)-282-5810 (Phone)  
(818)-707-0392 (Fax)  
[order@abiocode.com](mailto:order@abiocode.com)  
Web: [www.Abiocode.com](http://www.Abiocode.com)

---

## **CAMK2D (C2) Antibody, Rabbit Polyclonal**

**Cat#: R1403-2**

**Quantity: 100 ul**

**Predicted | Observed M.W.: 56 kDa**

**Lot#: Refer to vial**

**Application: WB**

**Uniprot ID: Q13557**

### **Background:**

CAMK2D is involved in the regulation of Ca<sup>2+</sup> homeostasis and excitation-contraction coupling (ECC) in heart by targeting ion channels, transporters and accessory proteins involved in Ca<sup>2+</sup> influx into the myocyte, Ca<sup>2+</sup> release from the sarcoplasmic reticulum (SR), SR Ca<sup>2+</sup> uptake and Na<sup>+</sup> and K<sup>+</sup> channel transport. CAMK2D targets also transcription factors and signaling molecules to regulate heart function. In its activated form, is involved in the pathogenesis of dilated cardiomyopathy and heart failure. CAMK2D is expressed in cardiac muscle and skeletal muscle.

### **Other Names:**

Calcium/calmodulin-dependent protein kinase type II subunit delta, CAMKD

### **Source and Purity:**

Rabbit polyclonal antibodies were produced by immunizing animals with a GST-fusion protein containing the C-terminal region of human CAMK2D. Antibodies were purified by affinity purification using immunogen.

### **Storage Buffer and Condition:**

Supplied in 1 x PBS (pH 7.4), 100 ug/ml BSA, 40% Glycerol, 0.01% NaN<sub>3</sub>. Store at -20 °C. Stable for 6 months from date of receipt.

### **Species Specificity:**

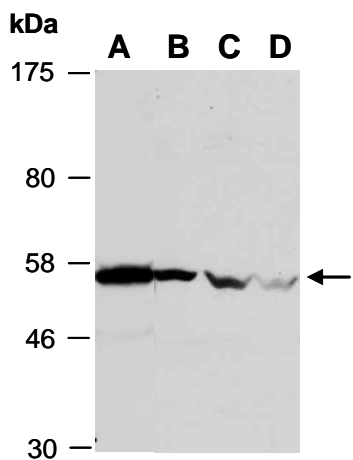
Human, Mouse

### **Tested Applications:**

WB: 1:1,000-1:3,000 (detect endogenous protein\*)

\*: The apparent protein size on WB may be different from the calculated M.W. due to modifications.

**Product Data:**



**Fig 1.** Western blot of total cell extracts from (A) mouse brain, (B) mouse thymus, (C) human HeLa, (D) human Jurkat; using anti-CAMK2D (C2) (R1403-2) at RT for 2 h.