



Order: (888)-282-5810 (Phone)  
(818)-707-0392 (Fax)  
[order@abiocode.com](mailto:order@abiocode.com)  
Web: [www.Abiocode.com](http://www.Abiocode.com)

---

## **CSNK1E (C2) Antibody, Rabbit Polyclonal**

**Cat#: R1482-2**

**Quantity: 100 ul**

**Predicted | Observed M.W.: 47 | 42 kDa**

**Lot#: Refer to vial**

**Application: WB**

**Uniprot ID: P49674**

### **Background:**

CSNK1E has been implicated in the control of cytoplasmic and nuclear processes, including DNA replication and repair. CSNK1E also phosphorylates a large number of proteins. Participates in Wnt signaling. Phosphorylates DVL1. Central component of the circadian clock. May act as a negative regulator of circadian rhythmicity by phosphorylating PER1 and PER2. Retains PER1 in the cytoplasm. Inhibits cytokine-induced granulocytic differentiation.

### **Other Names:**

Casein kinase I isoform epsilon, CKIE, CKIepsilon, HCKIE

### **Source and Purity:**

Rabbit polyclonal antibodies were produced by immunizing animals with a GST-fusion protein containing the C-terminal region of human CSNK1E. Antibodies were purified by affinity purification using immunogen.

### **Storage Buffer and Condition:**

Supplied in 1 x PBS (pH 7.4), 100 ug/ml BSA, 40% Glycerol, 0.01% NaN<sub>3</sub>. Store at -20 °C. Stable for 6 months from date of receipt.

### **Species Specificity:**

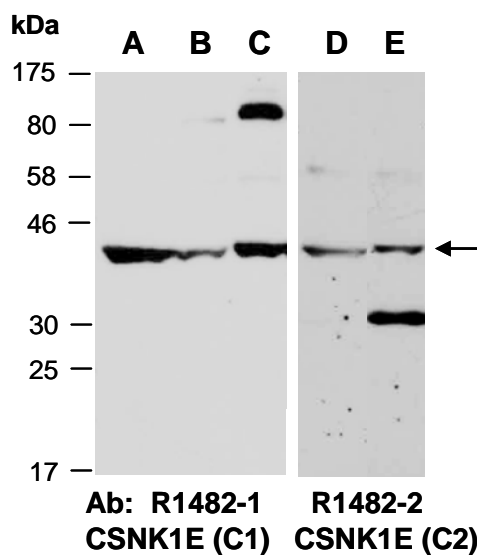
Human, Mouse

### **Tested Applications:**

WB: 1:1,000-1:3,000 (detect endogenous protein\*)

\*: The apparent protein size on WB may be different from the calculated M.W. due to modifications.

**Product Data:**



**Fig 1.** Western blot of total cell extracts from (A, D) mouse brain, (B) mouse thymus, (C, E) human HeLa; using 2 independent Abs against 2 distinct C-terminal regions of human CSNK1E at RT for 2 h.