



Order: (888)-282-5810 (Phone)
(818)-707-0392 (Fax)
order@abiocode.com
Web: www.Abiocode.com

RALBP1 (N) Antibody, Rabbit Polyclonal

Cat#: R1855-1

Quantity: 100 ul

Predicted | Observed M.W.: 76 | 100 kDa

Lot#: Refer to vial

Application: WB

Uniprot ID: Q15311

Background:

RALBP1 activates specifically hydrolysis of GTP bound to RAC1 and CDC42, but not RALA. Mediates ATP-dependent transport of S-(2,4-dinitrophenyl)-glutathione (DNP-SG) and doxorubicin (DOX) and is the major ATP-dependent transporter of glutathione conjugates of electrophiles (GS-E) and DOX in erythrocytes. RALBP1 also catalyzes transport of glutathione conjugates and xenobiotics, and may contribute to the multidrug resistance phenomenon.

Other Names:

RalA-binding protein 1, 76 kDa Ral-interacting protein, Dinitrophenyl S-glutathione ATPase, Ral-interacting protein 1, RLIP1, RLIP76

Source and Purity:

Rabbit polyclonal antibodies were produced by immunizing animals with a GST-fusion protein containing the N-terminal region of human RALBP1. Antibodies were purified by affinity purification using immunogen.

Storage Buffer and Condition:

Supplied in 1 x PBS (pH 7.4), 100 ug/ml BSA, 40% Glycerol, 0.01% NaN₃. Store at -20 °C. Stable for 6 months from date of receipt.

Species Specificity:

Human, Mouse

Tested Applications:

WB: 1:1,000-1:3,000 (detect endogenous protein*)

*: The apparent protein size on WB may be different from the calculated M.W. due to modifications.

Product Data:

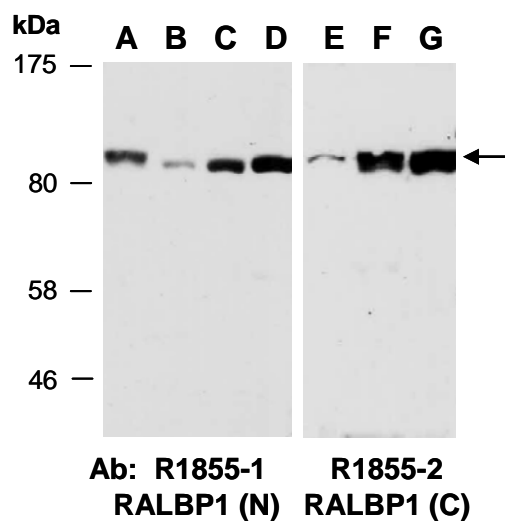


Fig 1. Western blot of total cell extracts from (A) mouse brain, (B, E) mouse thymus, (C, F) human HeLa, (D, G) human Jurkat; using 2 independent Abs against 2 distinct regions of human RALBP1 at RT for 2 h.