



Order: (888)-282-5810 (Phone)
(818)-707-0392 (Fax)
order@abiocode.com
Web: www.Abiocode.com

FOSL1 (C2) Antibody, Rabbit Polyclonal

Cat#: R0844-3

Quantity: 100 ul

Predicted | Observed MW: 29 | 38 kDa

Lot#: Refer to vial

Application: WB

Uniprot ID: P15407

Background:

Fos-related antigen 1 (FOSL1) is a heterodimer belonging to the bZIP family and the Fos subfamily. The Fos gene family consists of 4 members: FOS, FOSB, FOSL1, and FOSL2. These genes encode leucine zipper proteins that can dimerize with proteins of the JUN family, thereby forming the transcription factor complex AP-1. The FOS proteins have been implicated as regulators of cell proliferation, differentiation, and transformation.

Other Names:

Fos-related antigen 1, FRA-1, FRA1

Source and Purity:

Rabbit polyclonal antibodies were produced by immunizing animals with a GST-fusion protein containing the C-terminal region of human FOSL1. Antibodies were purified by affinity purification using immunogen.

Storage Buffer and Condition:

Supplied in 1 x PBS (pH 7.4), 100 ug/ml BSA, 40% Glycerol, 0.01% NaN₃. Store at -20 °C. Stable for 6 months from date of receipt.

Species Specificity:

Human, Mouse

Tested Applications:

WB: 1:1,000-1:3,000 (detect endogenous protein*)

*: The apparent protein size on WB may be different from the calculated M.W. due to modifications.

Product Data:

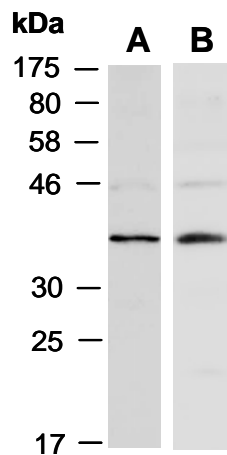


Fig 1. Western blot of total cell extracts from mouse brain, using 2 independent Abs against 2 distinct C-terminal regions of human FOSL1 [A: anti-FOSL1 (C1) (R0844-2); B: anti-FOSL1 (C2) (R0844-3)] at RT for 2 h.