



Order: (888)-282-5810 (Phone)
(818)-707-0392 (Fax)
order@abiocode.com
Web: www.Abiocode.com

TET3 (N1) Antibody, Rabbit Polyclonal

Cat#: R1092-1

Quantity: 100 ul

Predicted M.W.: 179 kDa

Lot#: Refer to vial

Application: WB, IP

Uniprot ID: O43151

Background:

TET3 is a methylcytosine dioxygenase that catalyzes the conversion of methylcytosine (5mC) to 5-hydroxymethylcytosine (5hmC), and may play a role in DNA demethylation. TET3 is a member of the ten-eleven translocation (TET) gene family.

Other Names:

Methylcytosine dioxygenase TET3, KIAA0401

Source and Purity:

Rabbit polyclonal antibodies were produced by immunizing animals with a GST-fusion protein containing the N-terminal region of human TET3. Antibodies were purified by affinity purification using immunogen.

Storage Buffer and Condition:

Supplied in 1 x PBS (pH 7.4), 100 ug/ml BSA, 40% Glycerol, 0.01% NaN₃. Store at -20 °C. Stable for 6 months from date of receipt.

Species Specificity:

Human, Mouse

Tested Applications:

WB: 1:500-1:2,000 (detect endogenous protein*)

Immunoprecipitation (IP): 1:50- 1:100

*: The apparent protein size on WB may be different from the calculated M.W. due to modifications.

Product Data:

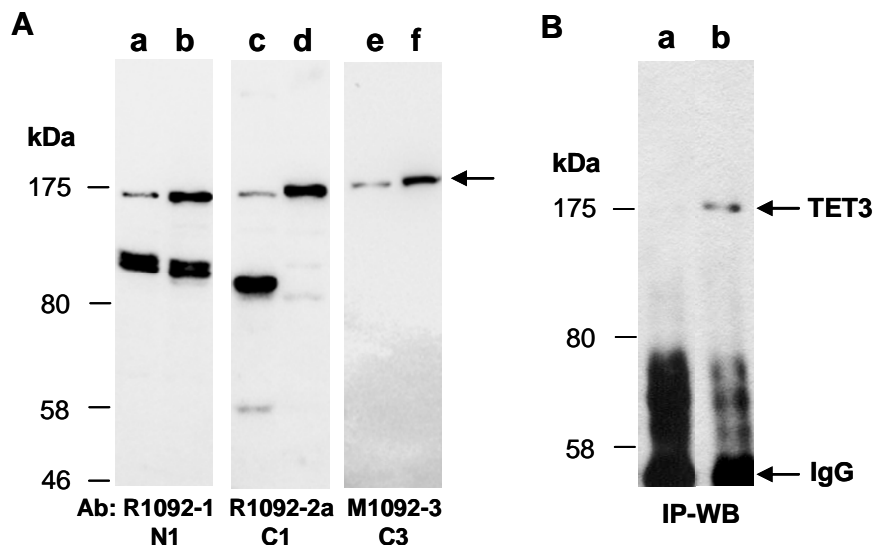


Fig 1. (A) Western blot of total cell extracts from (a, c, e) human Jurkat, (b, d, f) mouse thymus, using 3 independent Abs against 3 distinct regions of human TET3 at RT for 2 h. **(B)** IP-Western (WB). Total extracts from mouse thymus were immunoprecipitated with a. anti-TET2 (R1086-1a), b. anti-TET3 (R1092-1); followed by WB with monoclonal anti-TET3 (M1092-3) at RT for 2 h.