



Order: (888)-282-5810 (Phone)
(818)-707-0392 (Fax)
order@abiocode.com
Web: www.Abiocode.com

KYNU (N) Antibody, Rabbit Polyclonal

Cat#: R0945-1

Quantity: 100 ul

Predicted | Observed MW: 52 kDa

Lot#: Refer to vial

Application: WB

Uniprot ID: Q16719

Background:

Kynureninase (KYNU) belongs to the kynureninase family and catalyzes the cleavage of L-kynurenine (L-Kyn) and L-3-hydroxykynurenine (L-3OHKyn) into anthranilic acid (AA) and 3-hydroxyanthranilic acid (3-OHAA), respectively. KYNU has a preference for the L-3-hydroxy form and also has cysteine-conjugate-beta-lyase activity.

Other Names:

Kynureninase, L-kynurenine hydrolase

Source and Purity:

Rabbit polyclonal antibodies were produced by immunizing animals with a GST-fusion protein containing the N-terminal region of human KYNU. Antibodies were purified by affinity purification using immunogen.

Storage Buffer and Condition:

Supplied in 1 x PBS (pH 7.4), 100 ug/ml BSA, 40% Glycerol, 0.01% NaN₃. Store at -20 °C. Stable for 6 months from date of receipt.

Species Specificity:

Human, Mouse

Tested Applications:

WB: 1:1,000-1:3,000 (detect endogenous protein*)

*: The apparent protein size on WB may be different from the calculated M.W. due to modifications.

Product Data:

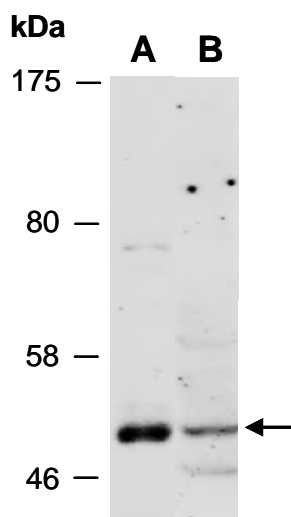


Fig 1. Western blot of total cell extracts from (A) mouse thymus, (B) human Jurkat; using anti-KYNU (N) (R0945-1) at RT for 2 h.