



Order: (888)-282-5810 (Phone)
(818)-707-0392 (Fax)
order@abiocode.com
Web: www.Abiocode.com

EFNB1 (M) Antibody, Rabbit Polyclonal

Cat#: R1650-1

Quantity: 100 ul

Predicted | Observed M.W.: 44 | 48 kDa

Lot#: Refer to vial

Application: WB

Uniprot ID: P98172

Background:

Ephrin-B1 (EFNB1) is a single-pass type I membrane protein that belongs to the ephrin family. EFNB1 is a ligand for Eph receptors, including EPHB3, EPHB1 and EPHA1, a family of tyrosine kinases crucial for migration, repulsion and adhesion during neuronal, vascular and epithelial development. EFNB1 binds promiscuously to Eph receptors residing on adjacent cells, leading to contact-dependent bidirectional signaling into neighboring cells. The signaling pathway downstream of the receptor is referred to as forward signaling while the signaling pathway downstream of the ephrin ligand is referred to as reverse signaling. EFNB1 may play a role in constraining the orientation of longitudinally projecting axons. Defects in EFNB1 are a cause of craniofrontonasal syndrome (CFNS).

Other Names:

Ephrin-B1, EFL-3, ELK ligand, ELK-L, EPH-related receptor tyrosine kinase ligand 2, LERK-2, EFL3, EPLG2, LERK2

Source and Purity:

Rabbit polyclonal antibodies were produced by immunizing animals with a GST-fusion protein containing the middle region of human EFNB1. Antibodies were purified by affinity purification using immunogen.

Storage Buffer and Condition:

Supplied in 1 x PBS (pH 7.4), 100 ug/ml BSA, 40% Glycerol, 0.01% NaN₃. Store at -20 °C. Stable for 6 months from date of receipt.

Species Specificity:

Human

Tested Applications:

WB: 1:1,000-1:3,000 (detect endogenous protein*)

*: The apparent protein size on WB may be different from the calculated M.W. due to modifications.

Product Data:

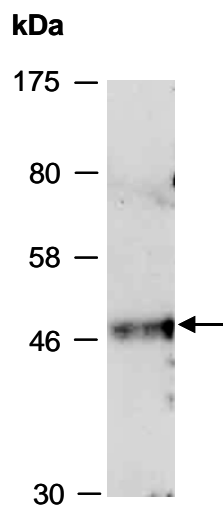


Fig 1. Western blot of total cell extracts from human Jurkat, using anti-EFNB1 (M) (R1650-1) at RT for 2 h.