



Order: (888)-282-5810 (Phone)
(818)-707-0392 (Fax)
order@abiocode.com
Web: www.Abiocode.com

EPHA1 (N) Antibody, Rabbit Polyclonal

Cat#: R2333-1

Quantity: 100 ul

Predicted | Observed M.W.: 108 kDa

Lot#: Refer to vial

Application: WB

Uniprot ID: P21709

Background:

EPHA1 binds promiscuously membrane-bound ephrin-A family ligands residing on adjacent cells, leading to contact-dependent bidirectional signaling into neighboring cells. The signaling pathway downstream of the receptor is referred to as forward signaling while the signaling pathway downstream of the ephrin ligand is referred to as reverse signaling. EPHA1 binds with a low affinity EFNA3 and EFNA4 and with a high affinity to EFNA1 which most probably constitutes its cognate/functional ligand. Upon activation by EFNA1 induces cell attachment to the extracellular matrix inhibiting cell spreading and motility through regulation of ILK and downstream RHOA and RAC. EPHA1 also plays a role in angiogenesis and regulates cell proliferation and may play a role in apoptosis. EPHA1 is overexpressed in several carcinomas.

Other Names:

EPH tyrosine kinase, EPH tyrosine kinase 1, Erythropoietin-producing hepatoma receptor, Tyrosine-protein kinase receptor EPH, EPH, EPHT, EPHT1

Source and Purity:

Rabbit polyclonal antibodies were produced by immunizing animals with a GST-fusion protein containing the N-terminal region of human EPHA1. Antibodies were purified by affinity purification using immunogen.

Storage Buffer and Condition:

Supplied in 1 x PBS (pH 7.4), 100 ug/ml BSA, 40% Glycerol, 0.01% NaN₃. Store at -20 °C. Stable for 6 months from date of receipt.

Species Specificity:

Human

Tested Applications:

WB: 1:1,000-1:3,000 (detect endogenous protein*)

*: The apparent protein size on WB may be different from the calculated M.W. due to modifications.

Product Data:

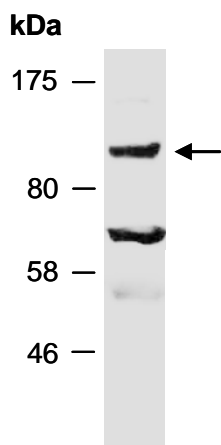


Fig 1. Western blot of total cell extracts from human Jurkat; using anti-EPHA1 (N) (R2333-1) at RT for 2 h.